

All the charms of Miho!

# MIHO NAVI MAP

"How do I get to Miho?" "What's in Miho?" We've created this map which includes all of Miho's charms in one place to answer all of these questions. Please look at this map while going all around Miho while learning all about Miho.

## Shimizu Area

- ### Map Legend
- Mt. Fuji viewing point
  - Places to eat
  - Accommodation
  - Rental cycle location
  - Bus stop
  - Restrooms
  - Handicapped Restroom
  - Parking
  - Tourist Guide Center

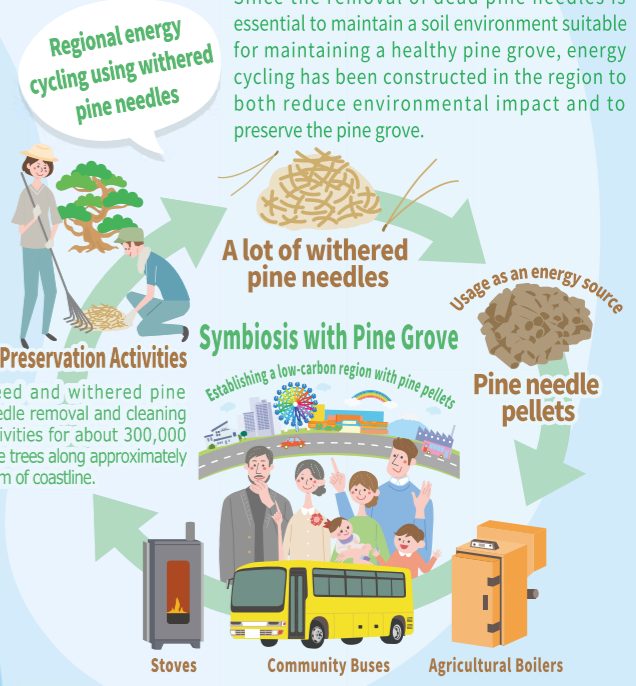
## Miho Area

### World Cultural Heritage (component asset) Site Miho-no-Matsubara (Pine Grove)

Miho-no-Matsubara as one of 3 major pine groves with over 300,000 point trees along about 7 km of the coast line. **The view of Mt. Fuji from the shore is truly a masterpiece.** The amazing view is such that it was selected as one of three best famous scenic views in Japan in 1916. On March 8th, 1922, the spot was named as the first scenic beauty spot in Japan under the Historical Spot, Scenic Beauty and Natural Monument Preservation Law (Cultural Property Protection Law) and was registered as a component asset of the Fujisan World Cultural Heritage Site.



Since the removal of dead pine needles is essential to maintain a soil environment suitable for maintaining a healthy pine grove, energy cycling has been constructed in the region to both reduce environmental impact and to preserve the pine grove.



### A facility promoting Miho-no-Matsubara Culture & Creativity Center Miho Shirube

Miho Shirube (Shizuoka City Miho-no-Matsubara Culture Creation Center) as a base for the conservation of Miho-no-Matsubara as well as guidance of the scenic Miho-no-Matsubara with its cultural value that has been enshrined in landscapes such as the beautiful pine forest and the view of Mount Fuji, and various art works such as the legend of Hagoromo, Ukiyo-e paintings and Waka poetry has opened! Please visit and experience the value and charm of Miho-no-Matsubara for yourself!



#### 1F Exhibition Room

Many works of art are displayed on the wall, and there is a theater where you can enjoy pictures of Miho-no-Matsubara's landscape, culture and art, and about the topography of Miho-no-Matsubara and the legend of Hagoromo.

#### 2F Books, Activities

A book corner with explanations about the necessity of the Matsubara Conservation Project, hands-on exhibitions of musical instruments using pine wood, and books and local materials related to Miho-no-Matsubara.

### A power stone found by the seashore Hachimaki Stone

The Miho Peninsula, which is famous for the Miho-no-Matsubara, is a landform made up of sediments and other materials that traveled down the Abe River from one of Japan's three major landslides, the Oyakuzure, upstream of the Abe River. These stones with white lines that you can see on the coast of Miho are called "Hachimaki (bandana) stones" and are famous as power stones that make wishes come true.



URL : <https://miho-no-matsubara.jp/>  
Operating Hours : 9:00-16:30 (no holidays) Free Admission

