

Mariko Area

Map for Information on Daily Life

Map Symbols

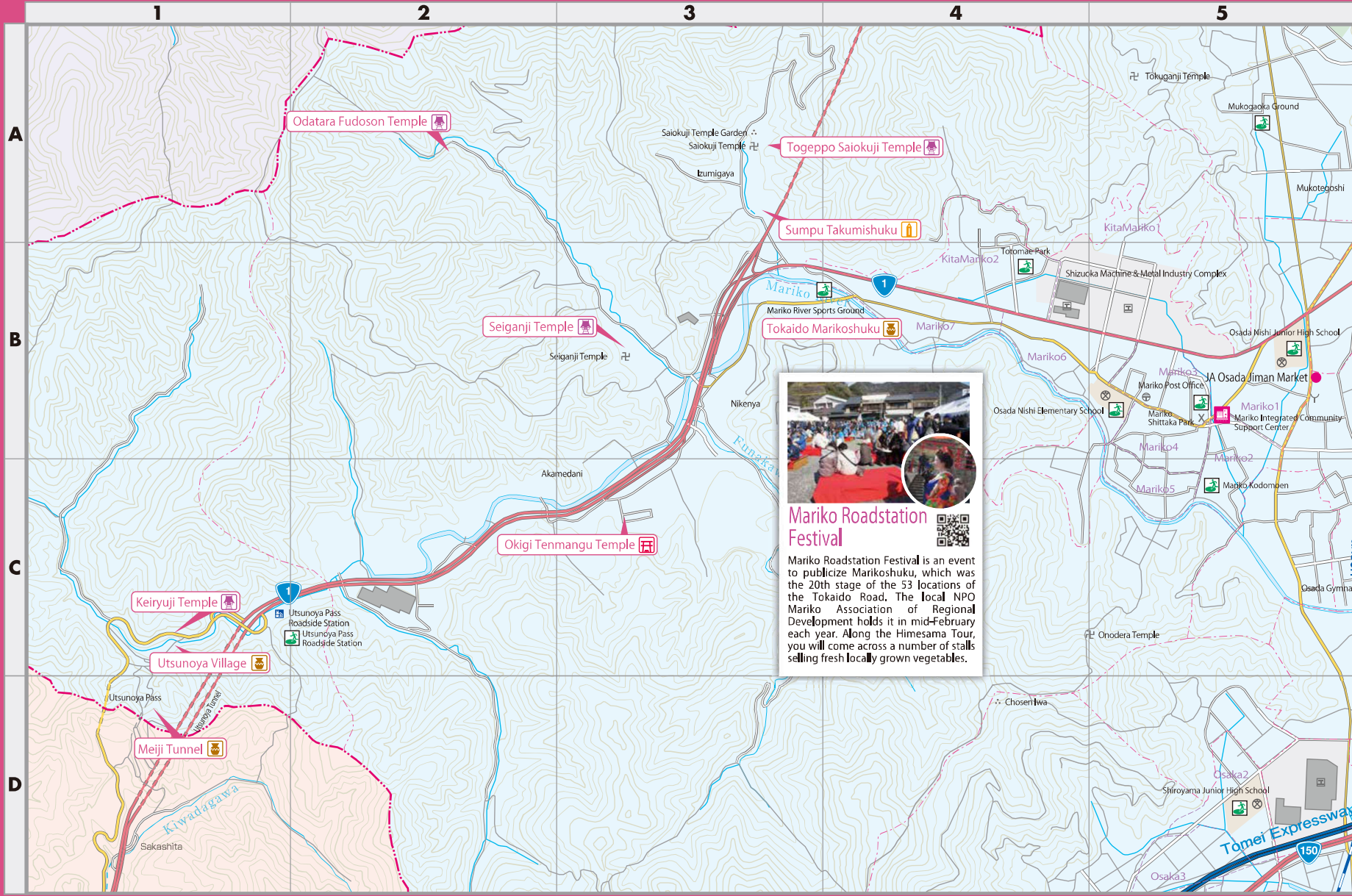
Spots to Introduce

- Nature
- History/Ruins
- Cultural Facility
- Shrine
- Temple
- Park
- Sports
- Other

General

- Citizen's Learning Center (community center)
- Library
- Citizen's Service Corner
- Evacuation Site
- Tsunami Evacuation Tower & Building
- Childrearing Support
- Sheltered Workshop
- Integrated Community Support Center

- Post Office
- Fire Station
- Koban (Police Box)
- School
- Hospital



Mochimune Area Map for Information on Daily Life

Map Symbols

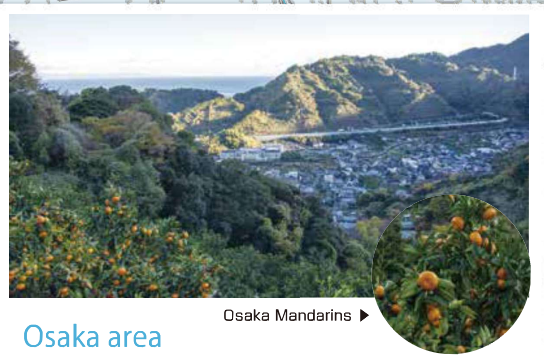
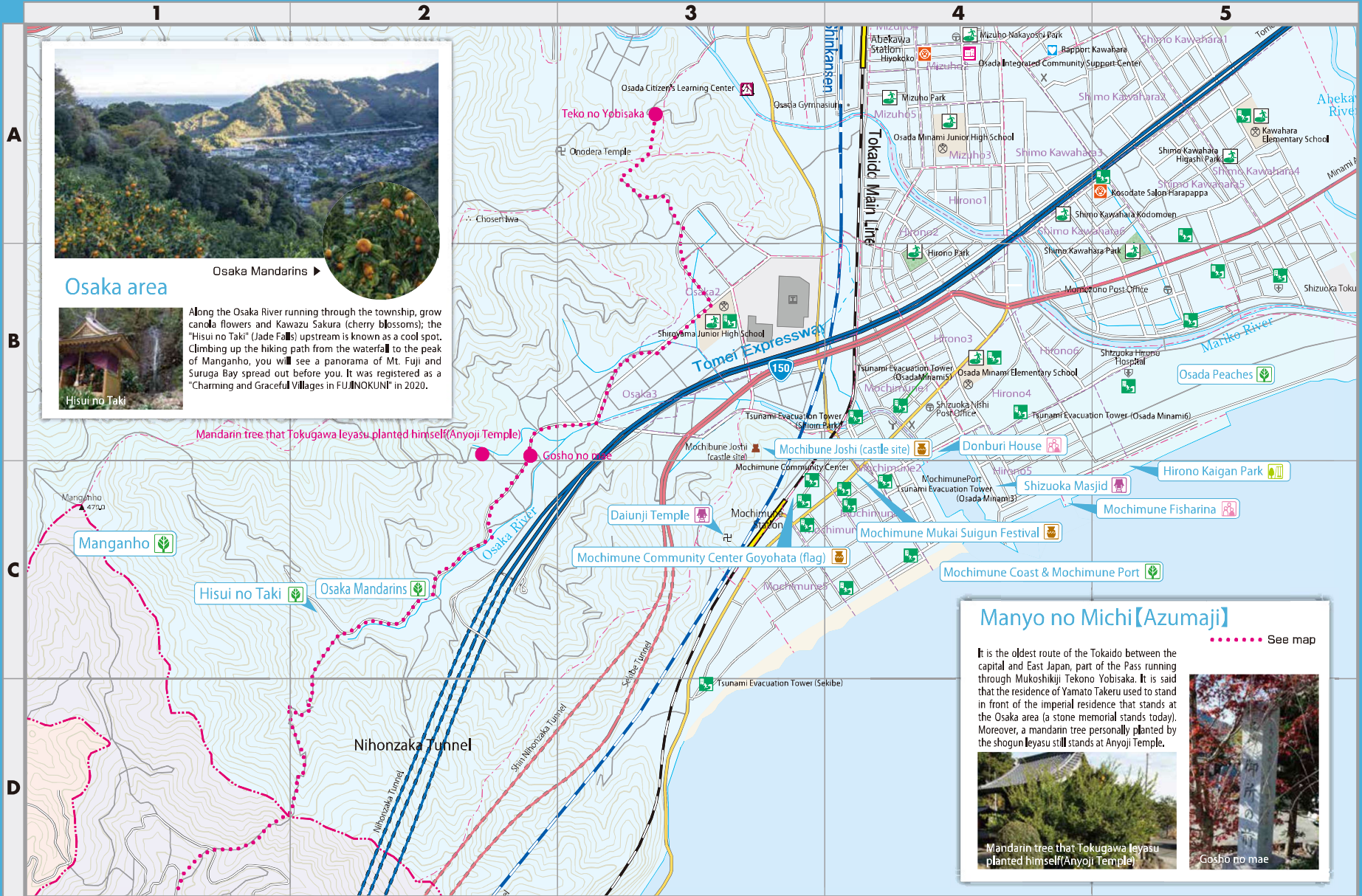
Spots to Introduce

- Nature
- History/Ruins
- Cultural Facility
- Shrine
- Temple
- Park
- Sports
- Other

General

- Citizen's Learning Center (community center)
- Library
- Citizen's Service Corner
- Evacuation Site
- Childrearing Support
- Sheltered Workshop
- Integrated Community Support Center
- Post Office
- Fire Station
- Koban (Police Box)
- School
- Hospital

Tsunami Evacuation Tower & Building



Osaka area

Osaka Mandarins ▶



Hisui no Taki

Along the Osaka River running through the township, grow canola flowers and Kawazu Sakura (cherry blossoms); the "Hisui no Taki" (Jade Falls) upstream is known as a cool spot. Climbing up the hiking path from the waterfall to the peak of Manganho, you will see a panorama of Mt. Fuji and Suruga Bay spread out before you. It was registered as a "Charming and Graceful Villages in FUJINOKUNI" in 2020.

Mandarin tree that Tokugawa Ieyasu planted himself (Anyoji Temple)

Gosho no mae

Manganho

Hisui no Taki

Osaka Mandarins

Nihonzaka Tunnel

Mochimune Community Center Goyohata (flag)

Mochimune Mukai Suigun Festival

Mochimune Coast & Mochimune Port

Manyo no Michi (Azumaji)

..... See map

It is the oldest route of the Tokaido between the capital and East Japan, part of the Pass running through Mukoshikiji Tekono Yobisaka. It is said that the residence of Yamato Takeru used to stand in front of the imperial residence that stands at the Osaka area (a stone memorial stands today). Moreover, a mandarin tree personally planted by the shogun Ieyasu still stands at Anyoji Temple.



Mandarin tree that Tokugawa Ieyasu planted himself (Anyoji Temple)

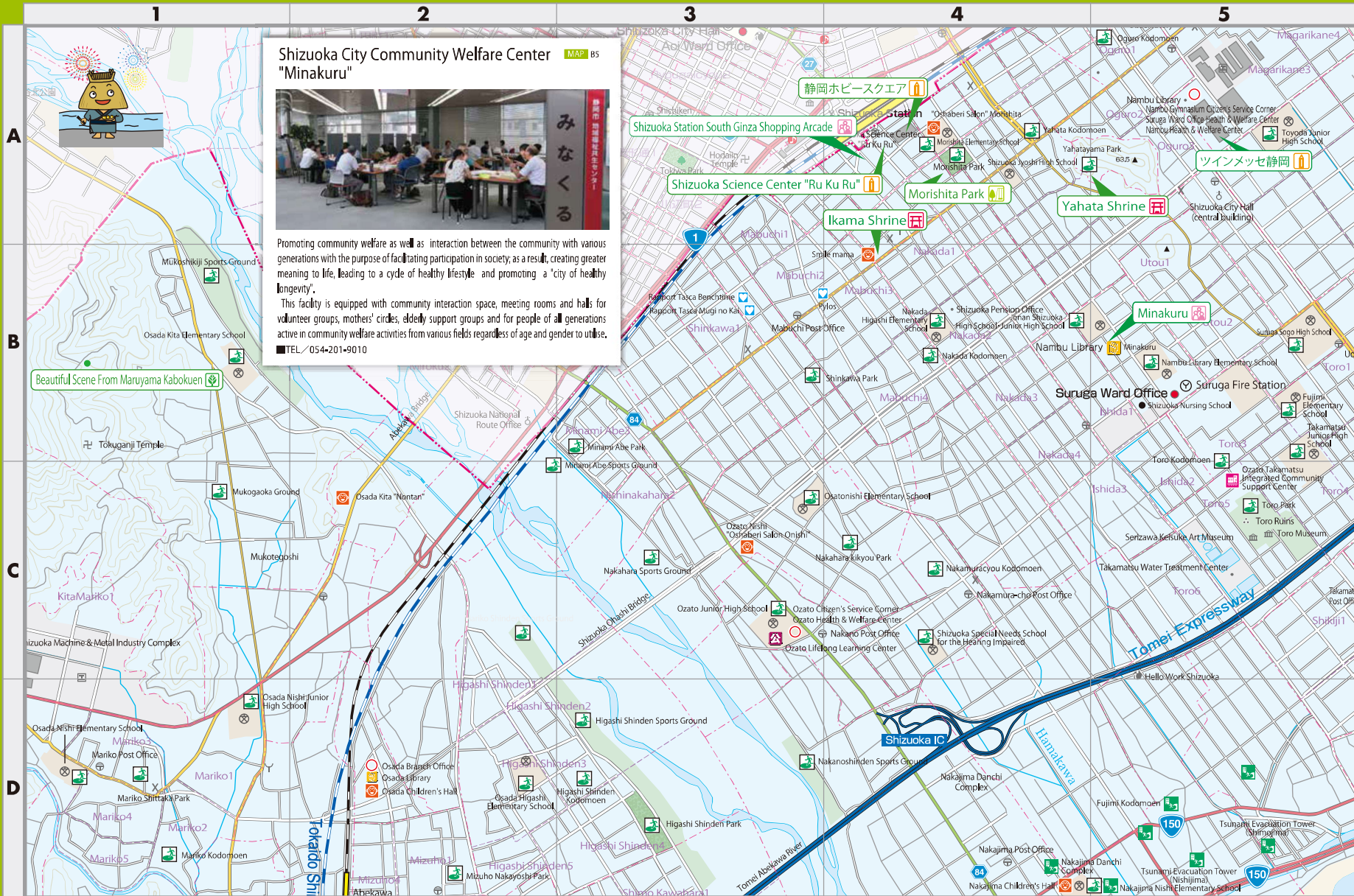
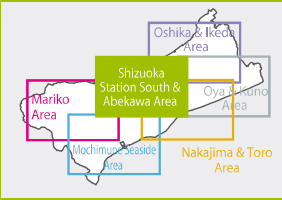


Gosho no mae

Shizuoka Station South & Abekawa Area Map for Information on Daily Life

Map Symbols

Spots to Introduce				General			
Nature	History/Ruins	Cultural Facility	Shrine	Citizen's Learning Center (community center)	Library	Citizen's Service Corner	Evacuation Site
Temple	Park	Sports	Other	Childrearing Support	Sheltered Workshop	Integrated Community Support Center	Tsunami Evacuation Tower & Building
				Post Office	Fire Station	Koban/Police Box	School
				Hospital			Hospital



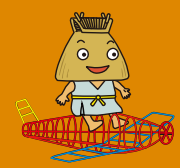
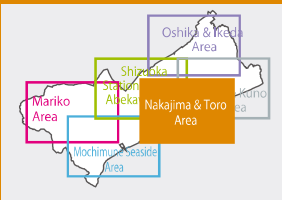
Nakajima & Toro Area Map for Information on Daily Life

Map Symbols

Nature	History/Ruins	Cultural Facility	Shrine
Temple	Park	Sports	Other

General

Citizen's Learning Center (community center)	Childrearing Support	Post Office
Library	Sheltered Workshop	Fire Station
Citizen's Service Corner	Integrated Community Support Center	Koban (Police Box)
Evacuation Site		School
Tsunami Evacuation Tower & Building		Hospital



Oshika & Ikeda Area Map for Information on Daily Life

Map Symbols

Spots to Introduce

- Nature
- History/Ruins
- Cultural Facility
- Shrine
- Temple
- Park
- Sports
- Other

General

- Citizen's Learning Center (community center)
- Library
- Citizen's Service Corner
- Evacuation Site
- Tsunami Evacuation Tower & Building
- Childrearing Support
- Sheltered Workshop
- Integrated Community Support Center
- Post Office
- Fire Station
- Koban (Police Box)
- School
- Hospital



Oya & Kuno Area Map for Information on Daily Life

Map Symbols

Spots to Introduce

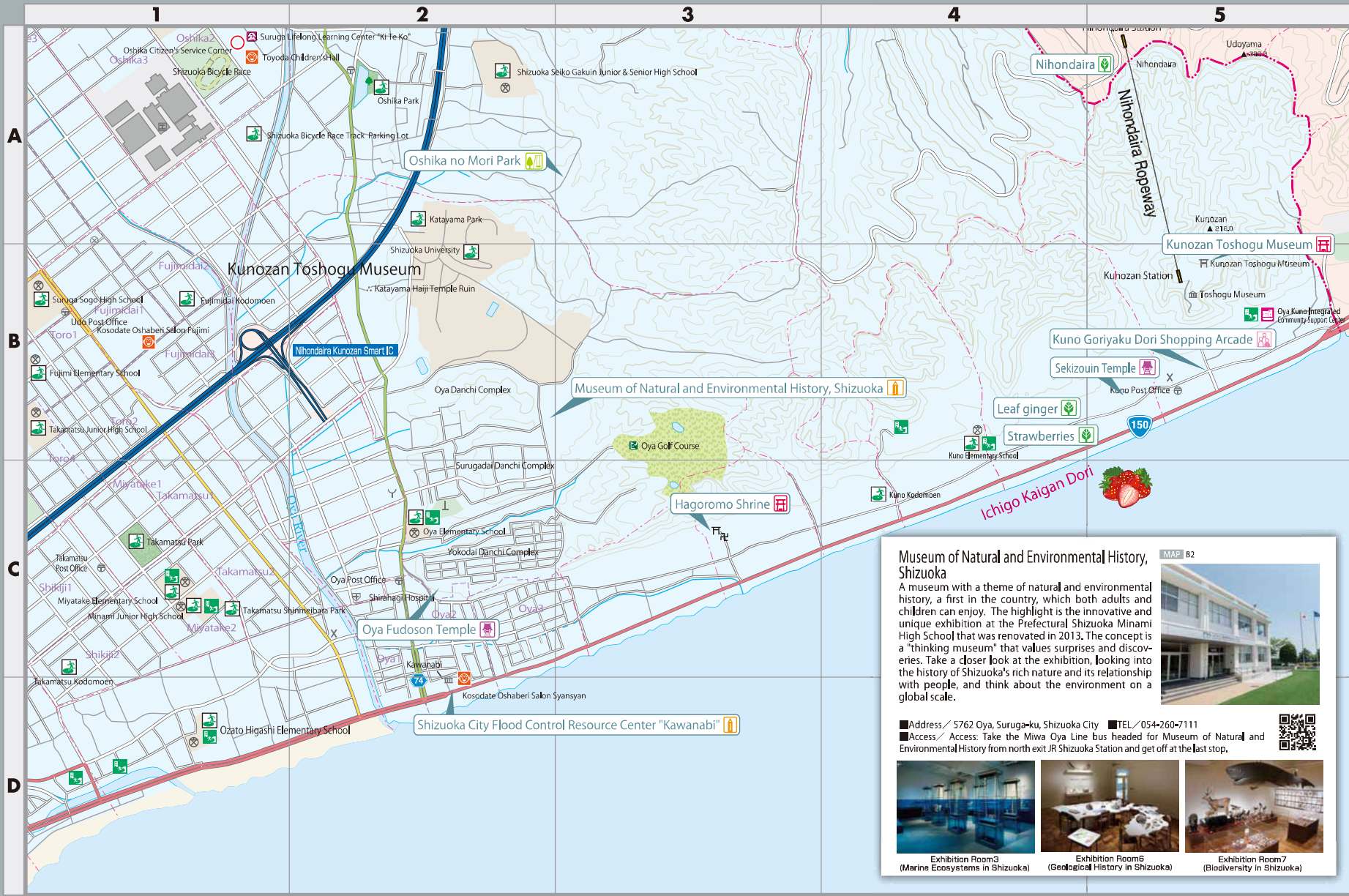
- Nature
- History/Ruins
- Cultural Facility
- Shrine
- Temple
- Park
- Sports
- Other

General

- Citizen's Learning Center (community center)
- Library
- Citizen's Service Corner
- Evacuation Site
- Tsunami Evacuation Tower & Building
- Childrearing Support
- Sheltered Workshop
- Integrated Community Support Center
- Post Office
- Fire Station
- Koban (Police Box)
- School
- Hospital



Oya & Kuno Area



Museum of Natural and Environmental History, Shizuoka

A museum with a theme of natural and environmental history, a first in the country, which both adults and children can enjoy. The highlight is the innovative and unique exhibition at the Prefectural Shizuoka Minami High School that was renovated in 2013. The concept is a "thinking museum" that values surprises and discoveries. Take a closer look at the exhibition, looking into the history of Shizuoka's rich nature and its relationship with people, and think about the environment on a global scale.

■ Address / 5762 Oya, Surugaku-ku, Shizuoka City ■ TEL / 054-260-7111

■ Access / Access: Take the Miwa Oya Line bus headed for Museum of Natural and Environmental History from north exit JR Shizuoka Station and get off at the last stop.

Exhibition Room3
(Marine Ecosystems in Shizuoka)

Exhibition Room6
(Geological History in Shizuoka)

Exhibition Room7
(Biodiversity in Shizuoka)