



静岡人 *h i z u o k a* Jin



This is an English publication of Shizuoka City life and event information. Information is from the City newsletter "SHIZUOKA KIBUN" & other City publications. Nonresidents should check for residency requirements. At least **basic Japanese speaking ability is needed** for participation in most of the events listed here. Multilingual interpretation is available when calling divisions of the City of Shizuoka.



Scan this QR Code to see the color version!

COVID-19 Information



Vaccination Call Center : 0120-113-394

Hours: Every day 8:30-20:30 (Interpretation available)

Reservation Website Login Page:

<https://vaccines.sciseed.jp/shizuoka-city-vaccine/login>
(Select Language from Top Right Corner)



This Month:

66th Shizuoka Festival

Individual Rabies Shots
for Dogs

Open Hours for Service
Counters at Ward Offices
Temporarily Extended

Let's Be Prepared for a
Tsunami

Shimizu S-Pulse 2022
Season Opens!

Booster (3rd) Vaccinations Underway

Booster (3rd) Vaccination Tickets are being sent out sequentially:

Those who have received their ticket can make a vaccination reservation. Updates regarding the sending of vaccination tickets will be available on the City website and Wednesday morning editions of the 'Shizuoka Shimbun' newspaper.

*You need a vaccination ticket to make a reservation. Information regarding vaccinations and instructions on how to make a reservation will be included in the envelope with your vaccination ticket.



1st and 2nd Vaccinations still available:

Those wishing to receive their 1st or 2nd Vaccinations should consult the City website or the Covid-19 Vaccination Call Center (above).

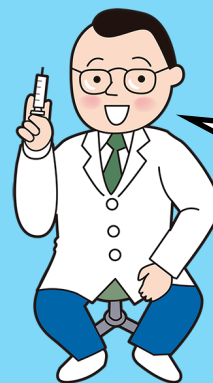


Advice from the City of Shizuoka:

We recommend making a reservation as soon you receive your ticket. All of the vaccines we use have been proven to be effective, regardless of maker.

*As per the Ministry of Health, Labour & Welfare's website.

*This information is accurate as at 3 February 2022



**Don't wait,
vaccinate!**



Payment Deadlines March

31 March (Thur)

**Medical Insurance for
Elderly over 75 (koki koreisha
iryō hoken ryo)** Stage 8

**National Health Insurance
(kokumin kenko hoken ryo)**
Stage 10

**National Pension Insurance
(kokumin nenkin hoken ryo)**
February portion

**Please continue
to be diligent
with infection
prevention
measures**



Wear a Mask



Wash Hands with
Soap



Disinfect Hands
with Alcohol



66th Shizuoka Festival

Inquiries: Shizuoka Matsuri
Organizing Committee
☎054-221-0182



Cherry Blossom Viewing Parade (*Ogoshō Hanami Gyōretsu*)

Reenacting Lord Tokugawa Iyasu taking his court to view the cherry blossoms at Sumpu, this grand parade will consist of 400 people!

2 April (Sat) 14:25 - 15:50 with Suzuki Fuku as Tokugawa Iyasu

3 April (Sun) 14:10 - 15:15 with Hosaka Naoki as Tokugawa Iyasu
From Egawa-cho Intersection to City Hall - Shizuoka Office

Parade to Sumpu Castle (*Sumpu Tojō Gyōretsu*)

The townspeople, invited by Lord Iyasu to join the banquet, parade to Sumpu Castle Park in a variety of costumes.

2 April (Sat) 11:00 (*Will take place the next day in event of rain)

From Ikama Shrine to Sumpu Castle Park

Yozakura Ranbu 'So-Odori' (Crowd Dance)

Come join thousands of people dancing together in the streets of Shizuoka as *sakura* petals whirl in the evening breeze.

2 April (Sat) 17:00 - 19:50

Jōka Sakura Odori (Beginner's Dance)

With fewer songs and more flamboyant costumes, this dance is perfect for children and beginners.

3 April (Sun) 15:00 - 16:50

On-the-day participants welcome for both dances. Bring ¥300 to Miyuki-cho and wear something pink!

There will also be a variety of events and stalls at Aoba Symbol Road and Sumpu Castle Park from 1 April (Fri) to 3 April (Sun)

Individual Rabies Shots for Dogs

Registering your dog and taking them for annual rabies shots are your legal duties as a pet owner.



Inquiries: Animal Guidance Center

Ubuze, Aoi-ku ☎054-278-6409

City Hall - Shimizu Office, 2F ☎054-354-2403



As of 2019, mass vaccinations are no longer available for dogs. Please take your dog to your local (or regular) vet to get a shot.

Eligible dogs: Dogs 91 days old and older.

What to bring: Vaccination reminder postcard (will be sent to registered dog owners at the end of March)

Costs: Rabies vaccination fee (inquire with your vet); ¥550 for issuance of rabies vaccination tag; ¥3000 dog registration fee (for unregistered dogs)

Important:

Your dog's registration tag and rabies vaccination tag help identify them if they get lost or in the event of a natural disaster. Please make sure to attach them to your dog's collar.

- Vaccinations available from April
- Please consult with your vet in advance if your dog has health problems
- If your dog was vaccinated for rabies outside of Shizuoka City and you received a vaccination certificate, you can get a rabies vaccination tag from an Animal Guidance Center or the Kambara Branch of Shimizu Ward Office.
- If your dog is registered outside of Shizuoka City, you will need to carry out change-of-registration procedure.

Open Hours for Service Counters at Ward Offices Temporarily Extended

When: 25 March (Fri) - 4 April (Mon)

Mon-Fri: 8:30 - 19:00, Sat, Sun: 9:00 - 16:00

(Normally open weekdays only 8:30 - 17:15)

Inquiries: City Call Center: ☎054-200-4894

Resident Registration Division of each Ward Office:

Aoi: ☎054-221-1061 Suruga: ☎054-287-8611 Shimizu: ☎054-354-2126

Resident Registration Division:

Change-of-address-related notifications, family-register-related notifications, seal registration, etc.

Childcare Support Division:

Child Allowance; Child-Rearing Allowance; Medical Expense Subsidy for Single-Parent Households, Etc.; Child Medical Expense Subsidy

*Not open Sat, Sun.



Insurance & Pension Division:

National Health Insurance, Medical Insurance for Elderly over 75, National Pension

Water and Sewerage Customer Service Center (Over the Phone)

Commencing or Canceling Water and Sewerage Services

☎054-251-1132; Normal operating hours: Weekdays 8:30 - 19:00

Also operating on weekends 8:30 - 17:00 during March and April

★Childcare Support Division hours are only extended on weekdays.

★Hours at Branch Offices, Resident Service Corners, and Consolation Counters will not be extended.

●Please consult the Resident Registration Division for your ward with regards to reservations for picking up My Number Cards, etc.

●Those with a My Number Card can receive certain certificates (such as copies of your Residence Certificate) at convenience stores.

(You will need your pin code for electronic certificates)

*For more information consult the Resident Registration Division for your ward.

The B1 parking lot at City Hall -Shizuoka Office is only available on weekdays and the weekend of 26, 27 March. Due to traffic restrictions for the Shizuoka Festival, it is not available on the weekend of 2, 3 April. Please use public transport on these days.

Scan the QR code to see the City Of Shizuoka's Online Administrative Procedure Guide (English version coming soon)



Let's Be Prepared for a Tsunami



Characteristics of a Tsunami:

Immense Destructive Power

During a tsunami the ocean bed rises and falls, moving the entirety of the sea water. All of the water, from the sea floor to the surface, is pushed towards the shore as one giant mass. Because of this, tsunamis hold more than enough power to crush houses, etc. with ease.

The speed of a jet

A tsunami's speed is connected to the depth of the ocean. The deeper the water, the faster the tsunami. At a depth of 5000m, a tsunami moves at the speed of a jet. Even near the shore, at a depth of 10m, it moves at 36km/h; about the speed of an Olympic sprinter. A normal person cannot outrun a tsunami.

2 to 3 Repetitions

Tsunamis come in twos or threes. Stay away from the shore until the tsunami warning has been lifted.

FY2021 Tsunami Evacuation Drill

When: 10:00 on 6 March 2022 (Sun)

Tsunami evacuation needs to be completed in a limited amount of time. Let's reconfirm tsunami evacuation procedure so we can move quickly if the worst comes to the worst.

Flow of Drill: *The contents of the drill are still tentative

10:00 Earthquake occurrence drill

Wireless Broadcast, Emergency Information Disaster Prevention Radio, Shizuoka City

Disaster Prevention Email Service

10:03 Major Tsunami Warning Announcement Drill

Emergency Rapid Communication Email, Wireless Broadcast, Emergency Information

Disaster Prevention Radio

Have You Seen These Signs? Make a Habit of Checking for Them!



Beware of Tsunami

This indicates areas that are in danger of being inundated by a tsunami if an earthquake occurs.



Tsunami Evacuation Building

This indicates a local tsunami evacuation building, in case you are in a coastal area and cannot make it to an evacuation site in time.



Tsunami Evacuation Site

This indicates an evacuation site that is safe from tsunamis (high ground, elevated bridge, pedestrian bridge, etc.)

Inquiries: Risk Management Center ☎054-221-1241

Regarding the tsunami evacuation drill in Suruga Ward: Suruga Ward Area Affairs Division ☎054-287-8683

Regarding the tsunami evacuation drill in Shimizu Ward: Shimizu Ward Area Affairs Division ☎054-354-2024

Shimizu S-Pulse 2022 Season Opens!

Inquiries: Sports Exchange Division ☎054-221-1072

The pride of Shizuoka begins their 2022 Season. Check their match dates below. We'll see you in the stands!



Date	Time	Traffic Restriction Times	Opponent	Date	Time	Traffic Restriction Times	Opponent
19 Feb (Sat)	14:00	15:30-17:00	Consadole Sapporo	25 May (Wed)	19:00	20:30-22:00	FC Tokyo
2 Mar (Wed)	19:00	20:30-22:00	Tokushima Vortis	18 Jun (Sat)	18:00	19:30-21:00	Avispa Fukuoka
12 Mar (Sat)	14:00	15:30-17:00	Cerezo Osaka	2 Jul (Sat)*	19:00	-	Yokohama F. Marinos
19 Mar (Sat)	14:00	15:30-17:00	Vissel Kobe	17 Jul (Sun)	18:00	19:30-21:00	Urawa Reds
10 Apr (Sun)	13:00	14:30-16:00	Gamba Osaka	31 Jul (Sun)	18:00	19:30-21:00	Sagan Tosu
23 Apr (Sat)	14:00	15:30-17:00	Nagoya Grampus	20 Aug (Sat)	18:00	19:30-21:00	Kashiwa Reysol
29 Apr (Pub Hol)	14:00	15:30-17:00	Sanfrecce Hiroshima	27 Aug (Sat)	18:00	19:30-21:00	Kyoto Sanga FC
7 May (Sat)	14:00	15:30-17:00	Kawasaki Frontale	10 or 11 Sep (Sat/Sun)	TBC Please check the Shimizu S-Pulse Website		Shonan Bellmare
18 May (Wed)	19:00	20:30-22:00	Sanfrecce Hiroshima	1 or 2 Oct (Sat/Sun)			Jubilo Iwata
21 May (Sat)	14:00	15:30-17:00	Nagoya Grampus	29 Oct (Sat)			Kashima Antlers

*The 2 July (Sat) match will be held at the Japan National Stadium in Tokyo.

The venue for all of the matches except the one on 2 July will be the S-Pulse home stadium, IAI Stadium, Nihondaira.

City Offices Directory

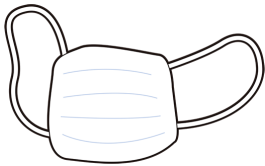
If you don't know the number of a particular office, call the Information Desk (*daihyō bangō*)

- **Aoi Ward Office** 054-254-2115
- **Shimizu Ward Office** 054-354-2111
- **Suruga Ward Office** 054-202-5811
- **City Hall - Shizuoka Office** 054-254-2111
- **City Hall - Shimizu Office** 054-354-2111
- **Shimizu Ward Office - Kambara Branch** 054-385-3111

Useful Services and Information



COVID-19 Information



English Information Page



Shizuoka City Association for Multicultural Exchange



一般財団法人

静岡市国際交流協会

Shizuoka City Association for Multicultural Exchange



Multilingual Consultation Service Shizuoka City

Offices & Associations Dealing Specifically with Foreign Nationals' Needs & Issues

Shizuoka City Association for Multicultural Exchange (SAME)	Shizuoka Office	Shimizu Office
	City Hall - Shizuoka Office, 17F 054-273-5931	City Hall - Shimizu Office, 2F 054-354-2009
Nagoya Regional Immigration Services Bureau-Shizuoka Branch Office	Ichise Center Bldg., 6F; 9-4 Tenma-cho, Aoi-ku 054-653-5571	

"Shizuoka Jin—Shizuoka City News and Events" is a free publication translated & edited by the City of Shizuoka International & Multicultural Affairs Division in cooperation with the Public Relations Division (*Kōhō Ka*). We appreciate your comments, inquiries and submissions.

City of Shizuoka International & Multicultural Affairs Division (*Shizuoka Shi Kokusai Koryu Ka*)

Tel. 054-221-1303 5-1 Ote-machi, Aoi-ku; Shizuoka City 〒420-8602
Send email inquiries regarding Shizuoka Jin to: cir@city.shizuoka.lg.jp

Shizuoka Jin Web Page: www.city.shizuoka.jp/000_002148.html

Aoi Ward's Character: Aoi-kun



葵区PR
キャラクター
あおいくん



Shimizu Ward's Character: Shizulla
©清水区

Suruga Ward's Character: Torobe
トロベ

