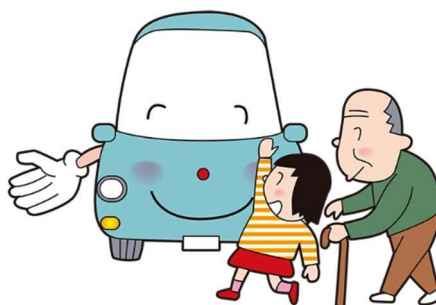


## Prefectural Summer Traffic Safety Initiative

Tues 11 to Thurs 20 July



### The City's Theme for this Year:

Pedestrians, Cars and Bicycles – Upholding Traffic Rules and Etiquette to Protect Ourselves and Other

### Traffic Accidents in Shizuoka City (Jan-Dec 2022)

Deaths: 11

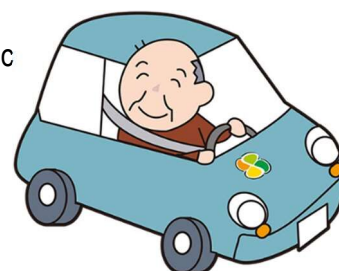
Injuries: 4,299

#### Characteristic 1: Accidents involving the elderly (1,304 accidents)

Accidents involving the elderly made up 36.4% (roughly a third) of all traffic accidents in the city.

#### Start today!

- When crossing a pedestrian crossing, signal your intention to drivers by raising your hand, etc.
- Make sure it's safe to cross before entering the road

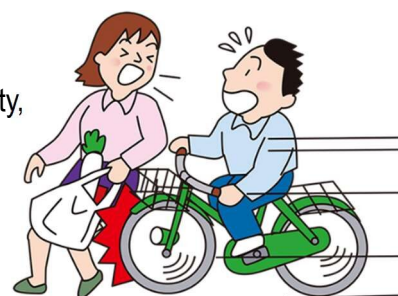


#### Characteristic 2: Accidents involving bicycles (875 accidents)

Accidents involving bicycles made up 24.4% of all traffic accidents in the city, significantly higher than the figure for the prefecture, which is 15.6%.

#### Start today!

- Make sure to obey the rules of the road, such as stopping at stop signs.
- Wear a helmet to protect your head!



In 2022, the number of accidents resulting in injury or death was 3,579. This is 72 more accidents than in 2021, meaning that extreme caution is required. In order to stop traffic accidents, each one of us must put safety first, slow down, follow the rules of the road, and practice good traffic etiquette.

**Inquiries:** Citizen Safety & Security Division ☎ 054-221-1058



**Translated by:**

International and Intercultural Affairs Division  
City of Shizuoka