

Final Tax Returns for Income Tax, Etc.

2025 Tax Return and Payment Deadlines, etc.

Tax Item	Return/Payment Deadline	Transfer Payment Date
Income tax and special income tax for reconstruction; gift tax	Mon 17 Mar	Wed 23 Apr (excl. gift tax)
Individual business owner consumption tax and local consumption tax	Mon 31 Mar	Wed 30 Apr

Return forms for income, consumer, and gift tax can be drawn up using the National Tax Agency website

- Final Tax Return Creation Corner: www.keisan.nta.go.jp/kyoutu/ky/sm/top#bsctrl
- Video showing how to create a tax return (includes segments on medical fee deductions, home loan deductions, linking with the My Number Portal, etc.)
www.nta.go.jp/taxes/shiraberu/shinkoku/tokushu/kakushin-sakusei/douga.htm
- For questions regarding final tax returns, use the chatbot "Tax Officer Futaba."
www.chat.nta.go.jp/?utm_source=ntahome_chatbot



Things to Check Before Applying:

When filing tax returns using your smartphone and My Number Card, two different passwords are required.

*Password can be reset at facilities such as convenience stores.

1. Electronic certificate of the bearer's signature
(6-16 digits using the English alphabet or numbers)
2. Electronic certificate of user proof
(4 numbers)

Returns Can be Filed in Person at Final Tax Return Venues

In principle residents draw up their own return forms at these venues using their smartphones. Staff will be available to help you if you get stuck.

When: Mon 17 Feb to Mon 17 Mar, 9:00-17:00

*Excluding weekends and holidays. Open on Sun 2 March. Reception closes at 16:00.

Where: Twin Messe

*The venue is a joint location of Shizuoka and Shimizu tax offices.

*Those with a My Number Card should bring it with them.

*Please do not phone Twin Messe directly.



Points of Caution:

- Ticket required to enter. Entry tickets will be distributed at the venue on the day or can be issued in advance via the National Tax Agency's Line Account.
<https://line.me/R/ti/p/%400994gqzfc>
- Depending on the number of entry tickets issued, you may be asked to come back another day. This can be checked on the National Tax Agency website.
- Tax return venues will not be set up at tax offices during the above period.
- We recommend residents with My Number Cards download the My Portal application in advance to speed up the process of drawing up their tax return forms.

Continued on next page...

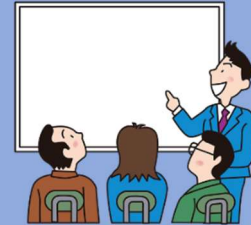
From January 2025 Onwards, Date of Receipt Will No Longer Be Stamped on Tax Return Form Duplicates

When submitting physical versions of documents such as tax return forms, please ensure that you only submit the original version (version for submission). Please record and store the date of submission yourself, if required.

Free Tax Consultations by Certified Tax Accountants

Eligible persons:

1. Those with annual income of less than 3 million yen for 2023.
2. Those whose taxable sales in the reference period (2022) for consumption tax in 2024 was less than 30 million yen, and who also fall under category 1
3. Salaried workers, pension recipients.



When (9:30 to 12:00, 13:00 to 16:00)	Where
Thur 13 to Fri 14 Feb	Warashina Lifelong Learning Center
Mon 17 to Thur 20 Feb	Shimizu Industry & Information Plaza
Wed 19 to Fri 21 Feb	Nishina Lifelong Learning Center
Wed 26 and Thur 27 Feb	Osada Lifelong Learning Center Miho Lifelong Learning Center

*Depending on congestion at the venue, reception may end early.

*Limited parking at each venue. Please use public transportation. (No parking at Shimizu Industry & Information Plaza)

*Consultations on capital gains (real estate, stocks), forestry income, gift tax, and inheritance tax will not be provided. Depending on the consultation content, you may be guided to other venues.

Inquiries: Shizuoka Tax Office ☎ 054-252-8111; Shimizu Tax Office ☎ 054-355-2360

*Automated voice guide



Translated by:
International and Intercultural Affairs Division
City of Shizuoka