

Events

6th Shizuoka Waiwai World Fair

Look, Learn, and Enjoy – Intercultural Cohesion Starts Here!

A popular annual event where people from various countries and backgrounds get together and have fun interacting and learning about other cultures. This year features games from around the world, including the Finnish phenomenon, M^ölkky. There will also be booths showcasing world cultures, food from across the globe, and more!

When: Sun 17 Nov 10:30-15:30 (Cancelled in case of stormy weather)

Where: Aoba Symbol Road (2 Gofuku-cho, Aoi-ku)

Entrance fee: Free! Head straight there on the day.

Inquiries: Shizuoka City Association for Multicultural Exchange (SAME) ☎ 054-273-5931

<http://samenet.jp>



Evangelion Crossing Expo

Experience the beloved mecha anime like never before at this giant expo featuring approximately 4000 exhibits!

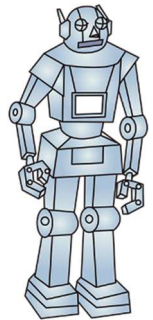
When: Fri 20 Dec 2024 to Sun 26 Jan 2025, 10:00-17:00 (Closed on Tue 31 Dec and Mon 20 Jan))

Where: Shimizu Cultural Hall, Marinart

Inquiries: Marinart ☎ 054-353-8885

Tickets: On sale from Sat 2 November <https://eva-x-expo.exhibit.jp>

1600 JPY (1800 JPY) for university students and older; 1000 JPY (1200 JPY) for junior high and high school students, 500 JPY for elementary school students, free for pre-school-aged children. (Prices in brackets are for same-day ticket sales. Free entry for one companion of a person with a disability certificate or medical rehabilitation handbook.)



Mt. Fuji Cosplay World Conference

Come and watch as popular cosplayers take to the runway and the stage!

There are a host of events, so come and take pictures of your favorite cosplayers!

When: Sat 16 & Sun 17 Nov, 10:30-18:30 *Cancelled in case of stormy weather

Where: Shimizu Station East Exit Park (Sodeshi-cho, Shimizu-ku), Shimizu Ekimae Ginza Shopping Mall, and more!

Viewing Cost: Free! Just head straight there on the day!

Inquiries: Mt. Fuji Cosplay World Conference Executive Committee (inside KYORITSUICOM)

☎ 054-635-4651

Website: www.fujicos.com

City Division in Charge: ON STAGE SHIZUOKA Promotion Division ☎ 054-221-1228



See the Treasures of the Tokugawa Shogun

For the first time ever, see the suits of armor of all 15 generations of Tokugawa shogun in one place! This exhibit also includes other treasures belonging to the prestigious Tokugawa clan.

When: 09:00-17:00 until Sat 30 Nov (last entry at 16:45)

Where: Kunozan Toshogu Shrine Museum

Admission: 400 JPY for general admission, 150 JPY for elementary and junior high school students

Inquiries: Kunozan Toshogu Shrine ☎ 054-237-2438

City Division in Charge: Cultural Properties Division ☎ 054-221-10566



2024 Illuminations

Inquiries: Commerce & Labor Division ☎ 054-354-2306

Aoba Symbol Road

This year's theme is "Hearts ♥"

When: Fri 22 Nov 2024 to Sun 9 Feb 2025, 16:30-22:00

*Extended until 24:00 from Sat 14 Dec 2024 to Mon 13 Jan 2025

Light-Up Ceremony

Fri 22 Nov, 17:00, Aoi Square (in front of City Hall Shizuoka Office)

Inquiries: I Love Shizuoka Council ☎ 054-252-7720

S-PULSE Dream Plaza

When: Sat 16 Nov 2024-Fri 28 Feb 2025, 16:00-23:00

Light-Up Ceremony: Sat 16 Nov, 17:00, S-Pulse Dream Plaza Main Building 1st Floor Ocean-Facing Deck

Inquiries: S-PULSE Dream Plaza ☎ 054-354-3360



Translated by:

International and Intercultural Affairs Division

City of Shizuoka