

DAIDOGEI WORLD CUP in SHIZUOKA

Friday 31 October – Monday 3 November

Venues:

Sumpu Castle Park, Aoi Ward City Center, S-Pulse Dream Plaza, and more

Contact:

Daidoge World Cup Executive Committee

☎ 054-205-9840 (Weekdays 10:00–18:00)

Official Website:

<https://daidoge.com/>



Experience World-Class Street Performance!

Now in its **32nd year**, this year's festival features **11 international artist groups** from countries including **Switzerland, Argentina, France, and Taiwan**, with legendary performers among them.

Over **40 Japanese artist groups** will also take part, ranging from seasoned veterans to exciting newcomers. The lineup promises a rich and diverse showcase of talent.

Performance Locations & Times

- **Sumpu Castle Park:** Until 19:00
- **City Center Locations:** Until 18:00 (some exceptions)
 - Shichiken-cho ARTIE
 - Fudanotsuji
 - Surugaya
 - City Hall Grand Staircase
 - Aoba Symbol Road
 - Tokiwa Park
 - Cenova 3rd Floor
- **Satellite Venues:**
 - S-Pulse Dream Plaza (2 locations): Until 17:00
 - Chuo Gymnasium (Premium Stage): Until 20:00

All performances begin at **11:00!**

Enjoy the Best Seats in the House!

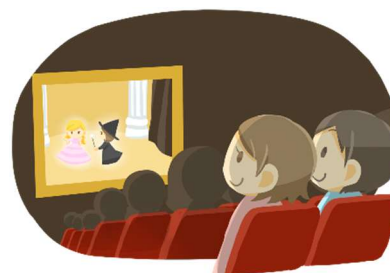
Ticketed Seating Available

Reserved seating is available for popular performances and busy venues.

At **Chuo Gymnasium**, enjoy the **Premium Stage** indoors—no need to worry about the weather.

Paid seating is also available inside **Sumpu Castle Park**, offering a comfortable viewing experience.

For ticket details, please refer to the **official guidebook**.



“SHOW-Ten Parade”

Saturday 1 November, from 11:30

Featuring 10 top-performing artist groups, the **Tokoha Junior and Senior High School Brass Band**, and the **Joy Choir Gospel Ensemble**, this lively parade will fill the streets with music and energy.

Live streaming available on YouTube for those who can't attend in person!

Route:

Shizu-Machi Gateway Point → Shichikencho ARTIE

Daidogei Stamp Rally

Collect stamps at **15 locations across the city**.

Gather stamps from **five or more spots** to enter a prize draw for exciting rewards!

How to Participate:

1. Pick up a flyer (stamp sheet) at participating shops
Participating locations are listed in the official guidebook map
2. Visit shops and collect stamps
3. Submit your completed sheet at the **goal point: Chuo Gymnasium**

Make the Most of It!

Official Guidebook Available Late September

Includes maps, artist profiles, performance schedules, and more.

- **Printed version:** Available for purchase at convenience stores in Shizuoka City
- **Digital version (free):** Available on the official website



Translated by:

International and Intercultural Affairs Division
City of Shizuoka
(Source: Shizuoka Kibun, October 2025)