

Make Sure to Declare and Pay Applicable Taxes by the Deadline!

Use your smartphone and My Number Card to take advantage of the "e-Tax from Home" system for your 2023 Final Tax Return (確定申告, *kakutei-shinkoku*).

*For consultations regarding final tax returns, use the chatbot "Tax Officer Futaba."

https://www.chat.nta.go.jp/?utm_source=ntahome_chatbot



Advantages of e-Tax:

1. No need to visit the tax office
2. No need for printing or postage
3. No need to submit attachments (excluding some documents)
4. Available 24/7 during the declaration period (excluding maintenance hours)
5. Speedy refunds (within approx. 3 weeks)

Convenient Features of Smartphone Declaration:

- Scan your withholding tax slip (源泉徴収票, *gensen-choshu-hyo*) for employment income using your smartphone camera!
- Includes support for blue return financial statements (青色申告決算書), income and expenditure statements (収支内訳書), and consumption tax returns (消費税の申告).

Final Tax Return Creation Corner: <https://www.keisan.nta.go.jp/kyoutu/ky/sm/top#bsctrl>

2023 Tax Return and Payment Deadlines, etc.

Tax Item	Return/Payment Deadline	Transfer Payment Date
Income tax and special income tax for reconstruction; gift tax	Fri 15 Mar	Tue 23 Apr (excl. gift tax)
Individual business owner consumption tax and local consumption tax	Mon 1 Apr	Tue 30 Apr

Regarding In-Person Final Tax Returns for Income Tax, etc.

When: Fri 16 Feb to Fri 15 Mar, 9:00-17:00

*Excluding weekends and holidays. Open on Sun 25 Feb. Consultations close at 16:00.

Where: Twin Messe Shizuoka

*The venue is a joint location for Shizuoka and Shimizu Tax Offices.

*Paid parking available (600 spaces) but fills up quickly. Please make use of public transport

*Please do not phone Twin Messe directly.

Caution:

- Ticket required to enter. Entry tickets will be distributed at the venue on the day, or can be issued in advance via the National Tax Agency's Line Account (<https://page.line.me/994qqzfc?openQrModal=true>).
- Depending on the number of entry tickets issued, you may be asked to come back another day. This can be checked on the National Tax Agency website.
- Tax return venues will not be set up at tax offices during the above period.
- You will need to draw up your own tax return at the venue.

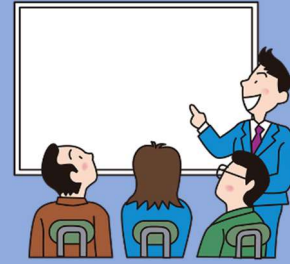


Free Tax Consultations by Certified Tax Accountants

*Entry ticket required. These will be distributed at the venue.

Eligible persons:

1. Those with annual income of less than 3 million yen for 2022.
2. Those whose taxable sales in the reference period (2021) for consumption tax in 2023 was less than 30 million yen, and who also fall under category 1
3. Salaried workers, pension recipients.



When (9:30 to 12:00, 13:00 to 16:00)	Where
Wed 14 to Fri 16 Feb	Seibu Lifelong Learning Center (3 Tamachi, Aoi-ku)
Tue 20 to Thur 22 Feb; Mon 26 to Thur 29 Feb	Twin Messe Shizuoka (3 Magarikane, Suruga-ku)
Wed 28 and Thur 29 Feb	Osada Lifelong Learning Center (Terada, Suruga-ku)
Fri 16 Feb Mon 19 to Wed 21 Feb	Shimizu Industry & Information Plaza (Aioi-cho, Shimizu-ku)
Tue 27 and Wed 28 Feb	Miho Lifelong Learning Center (Miho Matsubara-cho, Shimizu-ku)

*Depending on congestion at the venue, reception may end early.

*Limited parking at each venue. Please use public transportation.

*Consultations on capital gains (real estate, stocks), forestry income, gift tax, and inheritance tax will not be provided. Depending on the consultation content, you may be guided to other venues.

Inquiries: Shizuoka Tax Office ☎ 054-252-8111; Shimizu Tax Office ☎ 054-355-2360

*Automated voice guide



Translated by:
International and Intercultural Affairs Division
City of Shizuoka