

# I. 総括

# I 総括 01 年別・部別取扱高

単位：数量＝kg、金額＝円

区 分		数 量	比 率	金 額	比 率
部 別	年		前年対比		前年対比
青果部	4年	48,163,415	72.5%	12,231,837,466	38.5%
			93.0%		98.5%
	3年	51,772,078	70.9%	12,419,275,170	38.4%
			95.0%		94.4%
水産物部	4年	18,283,902	27.5%	19,537,341,668	61.5%
			86.0%		97.9%
	3年	21,252,222	29.1%	19,958,721,009	61.6%
			95.4%		98.9%
合 計	4年	66,447,317	100.0%	31,769,179,134	100.0%
			91.0%		98.1%
	3年	73,024,300	100.0%	32,377,996,179	100.0%
			95.1%		97.1%

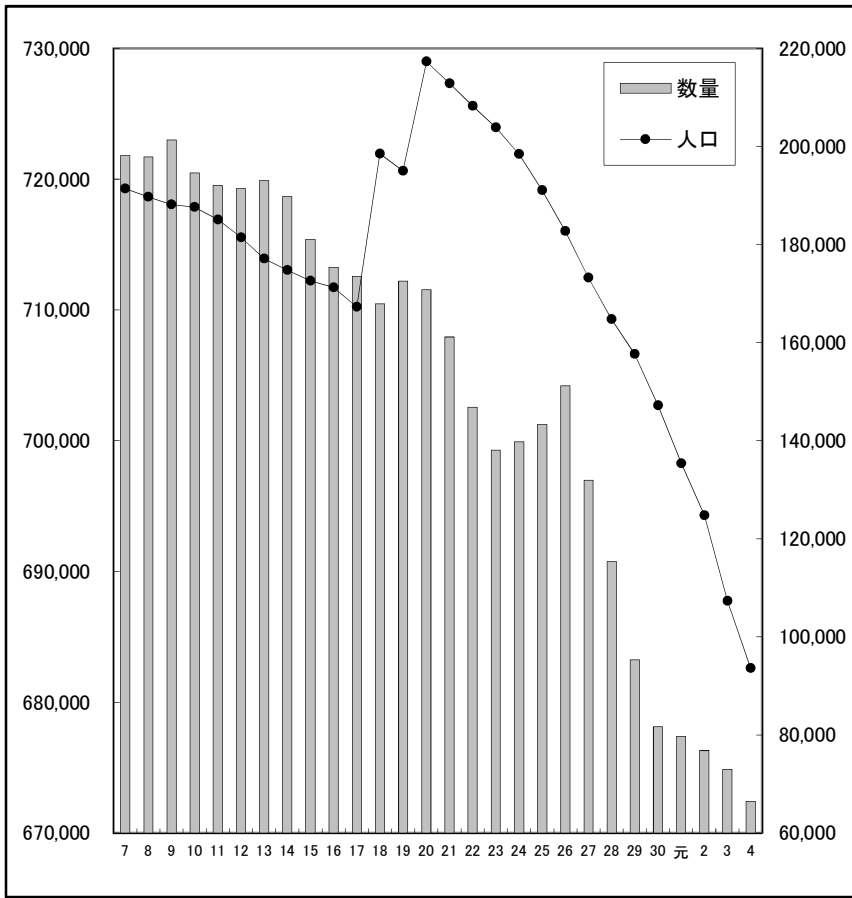
I 総括 02 人口と取扱高の推移

単位：人口＝人、開市日＝日 上段：数量＝kg  
前年対比・指数＝% 下段：金額＝円

年	静岡市人口 (毎年12月現在)	指数	青果部				水産物部				合計			
			前年対比	指数	開市日		前年対比	指数	開市日		前年対比	指数	開市日	
7	719,277	100.0	148,017,344	101.2	100.0	273	50,135,249	98.3	100.0	273	198,152,593	100.5	100.0	
			33,798,780,521	98.6	100.0		39,058,807,724	95.5	100.0		72,857,588,245	96.9	100.0	
8	718,653	99.9	149,491,289	101.0	101.0	272	48,370,164	96.5	96.5	272	197,861,453	99.9	99.9	
			33,348,769,463	98.7	98.7		39,203,498,502	100.4	100.4		72,552,267,965	99.6	99.6	
9	718,076	99.8	153,882,611	102.9	104.0	273	47,461,498	98.1	94.7	273	201,344,109	101.8	101.6	
			33,337,230,878	100.0	98.6		39,219,709,412	100.0	100.4		72,556,940,290	100.0	99.6	
10	717,885	99.8	147,558,897	95.9	99.7	275	47,088,534	99.2	93.9	275	194,647,431	96.7	98.2	
			35,987,426,191	107.9	106.5		37,752,949,871	96.3	96.7		73,740,376,062	101.6	101.2	
11	716,913	99.7	148,125,460	100.4	100.1	272	43,927,155	93.3	87.6	272	192,052,615	98.7	96.9	
			32,827,892,231	91.2	97.1		35,403,450,560	93.8	90.6		68,231,342,791	92.5	93.7	
12	715,543	99.5	148,280,160	100.1	100.2	275	43,097,859	98.1	86.0	275	191,378,019	99.6	96.6	
			30,370,094,564	92.5	89.9		33,721,881,027	95.3	86.3		64,091,975,591	93.9	88.0	
13	713,921	99.3	149,531,495	100.8	101.0	273	43,509,124	101.0	86.8	273	193,040,619	100.9	97.4	
			30,665,685,683	101.0	90.7		33,495,679,837	99.3	85.8		64,161,365,520	100.1	88.1	
14	713,058	99.1	147,513,207	98.7	99.7	272	42,280,779	97.2	84.3	272	189,793,986	98.3	95.8	
			29,887,628,139	97.5	88.4		32,067,627,777	95.7	82.1		61,955,255,916	96.6	85.0	
15	712,223	99.0	140,847,023	95.5	95.2	274	40,219,757	95.1	80.2	274	181,066,780	95.4	91.4	
			29,679,925,696	99.3	87.8		29,618,818,950	92.4	75.8		59,298,744,646	95.7	81.4	
16	711,728	99.0	136,565,041	97.0	92.3	279	38,823,829	96.5	77.4	279	175,388,870	96.9	88.5	
			29,641,765,918	99.9	87.7		29,461,522,836	99.5	75.4		59,103,288,754	99.7	81.1	
17	710,236	98.7	134,883,038	98.8	91.1	274	38,644,420	99.5	77.1	274	173,527,458	98.9	87.6	
			27,449,812,599	92.6	81.2		28,606,707,184	97.1	73.2		56,056,519,783	94.8	76.9	
18	721,945	100.4	130,396,871	96.7	88.1	274	37,578,160	97.2	75.0	274	167,975,030	96.8	84.8	
			27,778,295,370	101.2	82.2		28,771,036,940	100.6	73.7		56,549,332,310	100.9	77.6	
19	720,628	100.2	135,015,645	103.5	91.2	273	37,515,178	99.8	74.8	273	172,530,823	102.7	87.1	
			27,064,516,140	97.4	80.1		28,349,294,150	98.5	72.6		55,413,810,290	98.0	76.1	
20	728,996	101.4	135,170,732	100.1	91.3	274	35,606,954	94.9	71.0	274	170,777,686	99.0	86.2	
			27,038,556,262	99.9	80.0		28,100,999,223	99.1	71.9		55,139,555,485	99.5	75.7	
21	727,318	101.1	126,456,594	93.6	85.4	274	34,691,173	97.4	69.2	274	161,147,767	94.4	81.3	
			25,384,295,080	93.9	75.1		26,463,819,924	94.2	67.8		51,848,115,004	94.0	71.2	
22	725,610	100.9	115,132,201	91.0	77.8	273	31,664,760	91.3	63.2	274	146,796,961	91.1	74.1	
			26,217,891,015	103.3	77.6		24,603,742,378	93.0	63.0		50,821,633,393	98.0	69.8	
23	723,949	100.6	110,236,807	95.7	74.5	272	27,851,407	88.0	55.6	273	138,088,214	94.1	69.7	
			23,666,753,819	90.3	70.0		22,513,418,124	91.5	57.6		46,180,171,943	90.9	63.4	
24	721,924	100.4	111,497,958	101.1	75.3	273	28,243,626	101.4	56.3	274	139,741,584	101.2	70.5	
			23,412,902,367	98.9	69.3		22,991,088,991	102.1	58.9		46,403,991,358	100.5	63.7	
25	719,153	100.0	112,801,185	101.2	76.2	269	30,516,401	108.0	60.9	272	143,317,586	102.6	72.3	
			23,952,310,396	102.3	70.9		23,297,346,712	101.3	59.6		47,249,657,108	101.8	64.9	
26	716,019	99.5	122,059,577	108.2	82.5	268	29,180,092	95.6	58.2	270	151,239,669	105.5	76.3	
			24,739,968,687	103.3	73.2		23,333,123,204	100.2	59.7		48,073,091,891	101.7	66.0	
27	712,474	99.1	102,816,876	84.2	69.5	267	29,128,385	99.8	58.1	268	131,945,261	87.2	66.6	
			22,371,696,567	90.4	66.2		23,773,912,113	101.9	60.9		46,145,608,680	96.0	63.3	
28	709,286	98.6	87,468,859	85.1	59.1	264	27,846,200	95.6	55.5	266	115,315,059	87.4	58.2	
			21,258,369,910	95.0	62.9		23,030,234,872	96.9	59.0		44,288,604,782	96.0	60.8	
29	706,633	98.2	69,639,427	79.6	47.0	262	25,688,042	92.2	51.2	264	95,327,469	82.7	48.1	
			17,308,963,057	81.4	51.2		22,907,810,289	99.5	58.6		40,216,773,346	90.8	55.2	
30	702,702	97.7	56,708,623	81.4	38.3	256	24,944,927	97.1	49.8	260	81,653,550	85.7	41.2	
			14,307,885,101	82.7	42.3		22,751,202,201	99.3	58.2		37,059,087,302	92.1	50.9	
元	698,275	97.1	55,806,250	98.4	37.7	254	23,923,671	95.9	47.7	255	79,729,921	97.6	40.2	
			12,934,645,352	90.4	38.3		22,278,993,960	97.9	57.0		35,213,639,312	95.0	48.3	
2	694,296	96.5	54,519,735	97.7	36.8	254	22,272,936	93.1	44.4	257	76,792,671	96.3	38.8	
			13,150,193,388	101.7	38.9		20,178,245,558	90.6	51.7		33,328,438,946	94.6	45.7	
3	687,748	95.6	51,772,078	95.0	35.0	252	21,252,222	95.4	42.4	255	73,024,300	95.1	36.9	
			12,419,275,170	94.4	36.7		19,958,721,009	98.9	51.1		32,377,996,179	97.1	44.4	
4	682,619	94.9	48,163,415	93.0	32.5	251	18,283,902	86.0	36.5	256	66,447,317	91.0	33.5	
			12,231,837,466	98.5	36.2		19,537,341,668	97.9	50.0		31,769,179,134	98.1	43.6	

I 総括 03 人口と取扱高の推移（図表）(1)合計

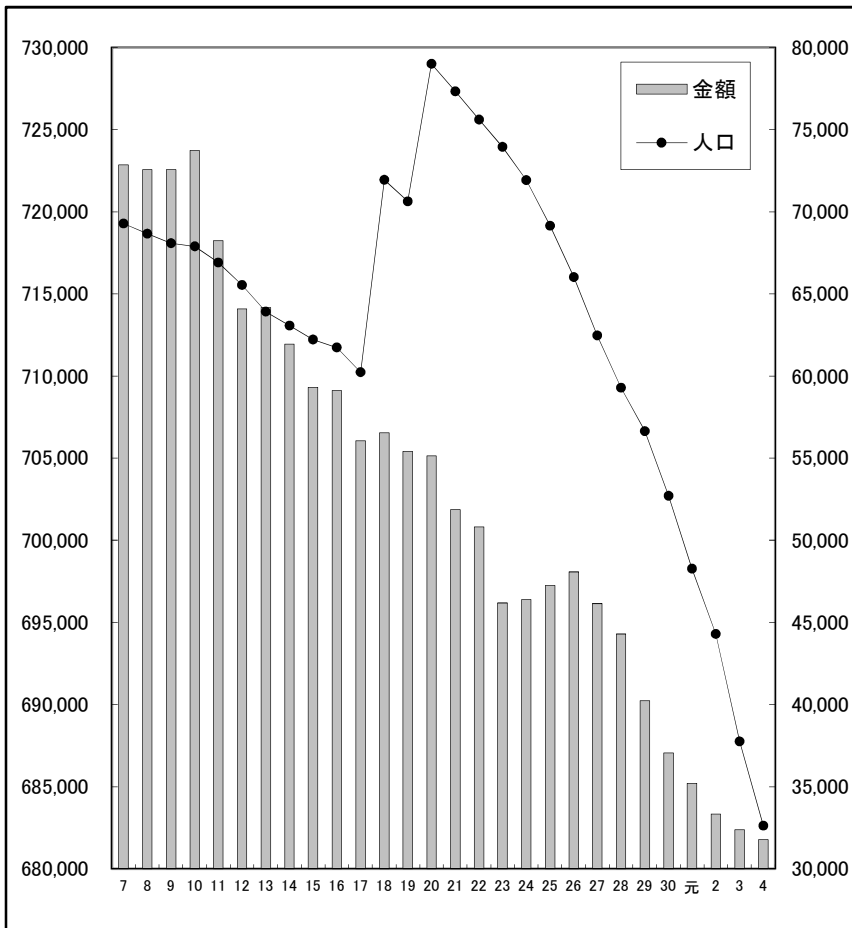
数量



(単位：人・トン)

年	人口	数量
7	719,277	198,152
8	718,653	197,861
9	718,076	201,344
10	717,885	194,648
11	716,913	192,052
12	715,543	191,378
13	713,921	193,040
14	713,058	189,794
15	712,223	181,067
16	711,728	175,389
17	710,236	173,527
18	721,945	167,975
19	720,628	172,531
20	728,996	170,778
21	727,318	161,148
22	725,610	146,797
23	723,949	138,088
24	721,924	139,742
25	719,153	143,317
26	716,019	151,240
27	712,474	131,945
28	709,286	115,315
29	706,633	95,327
30	702,702	81,654
元	698,275	79,730
2	694,296	76,793
3	687,748	73,024
4	682,619	66,447

金額

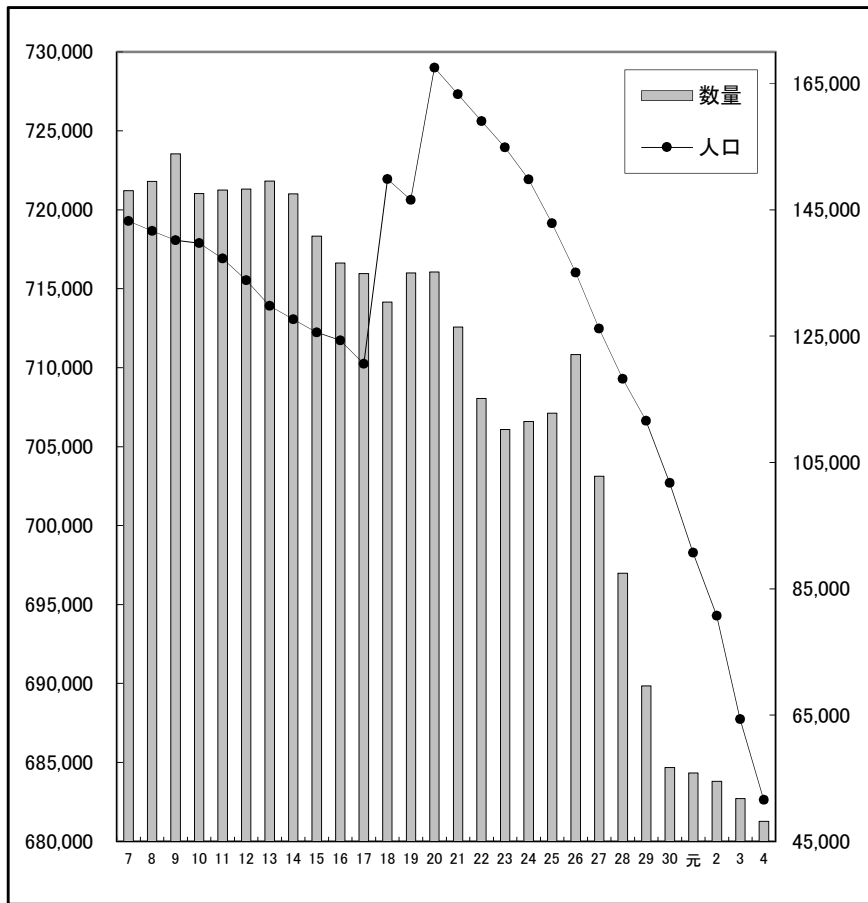


(単位：人・百万円)

年	人口	金額
7	719,277	72,858
8	718,653	72,552
9	718,076	72,557
10	717,885	73,740
11	716,913	68,231
12	715,543	64,092
13	713,921	64,162
14	713,058	61,956
15	712,223	59,299
16	711,728	59,104
17	710,236	56,057
18	721,945	56,549
19	720,628	55,414
20	728,996	55,140
21	727,318	51,848
22	725,610	50,822
23	723,949	46,180
24	721,924	46,404
25	719,153	47,249
26	716,019	48,073
27	712,474	46,146
28	709,286	44,288
29	706,633	40,217
30	702,702	37,059
元	698,275	35,214
2	694,296	33,328
3	687,748	32,378
4	682,619	31,769

# I 総括 03 人口と取扱高の推移 (図表) (2) 青果部

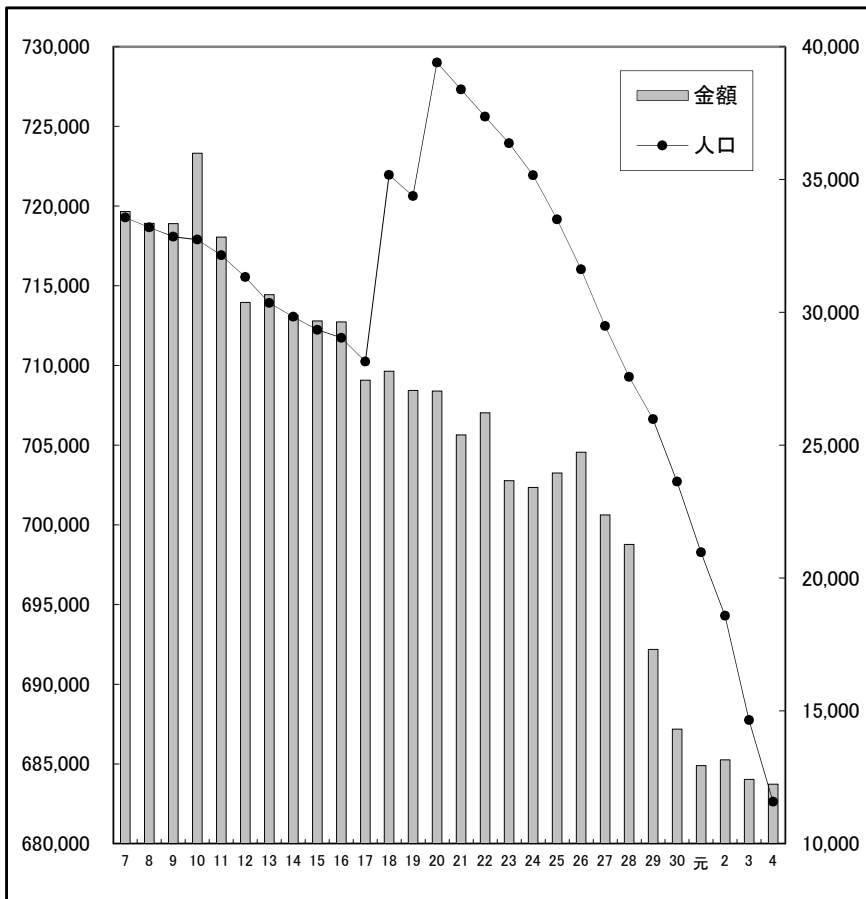
## 数量



(単位：人・トン)

年	人口	数量
7	719,277	148,017
8	718,653	149,491
9	718,076	153,883
10	717,885	147,559
11	716,913	148,125
12	715,543	148,280
13	713,921	149,531
14	713,058	147,513
15	712,223	140,847
16	711,728	136,565
17	710,236	134,883
18	721,945	130,397
19	720,628	135,016
20	728,996	135,171
21	727,318	126,457
22	725,610	115,132
23	723,949	110,237
24	721,924	111,498
25	719,153	112,801
26	716,019	122,060
27	712,474	102,817
28	709,286	87,469
29	706,633	69,639
30	702,702	56,709
元	698,275	55,806
2	694,296	54,520
3	687,748	51,772
4	682,619	48,163

## 金額

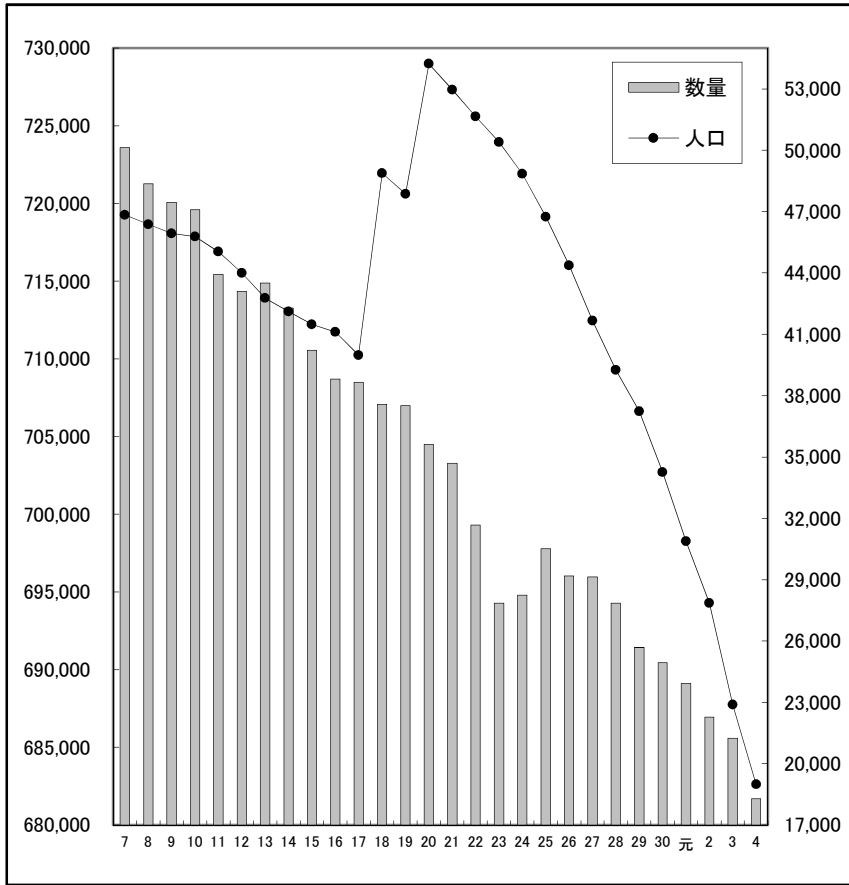


(単位：人・百万円)

年	人口	金額
7	719,277	33,799
8	718,653	33,349
9	718,076	33,337
10	717,885	35,987
11	716,913	32,828
12	715,543	30,370
13	713,921	30,666
14	713,058	29,888
15	712,223	29,680
16	711,728	29,642
17	710,236	27,450
18	721,945	27,778
19	720,628	27,065
20	728,996	27,039
21	727,318	25,384
22	725,610	26,218
23	723,949	23,667
24	721,924	23,413
25	719,153	23,952
26	716,019	24,740
27	712,474	22,372
28	709,286	21,258
29	706,633	17,309
30	702,702	14,308
元	698,275	12,935
2	694,296	13,150
3	687,748	12,419
4	682,619	12,232

I 総括 03 人口と取扱高の推移（図表）(3)水産物部

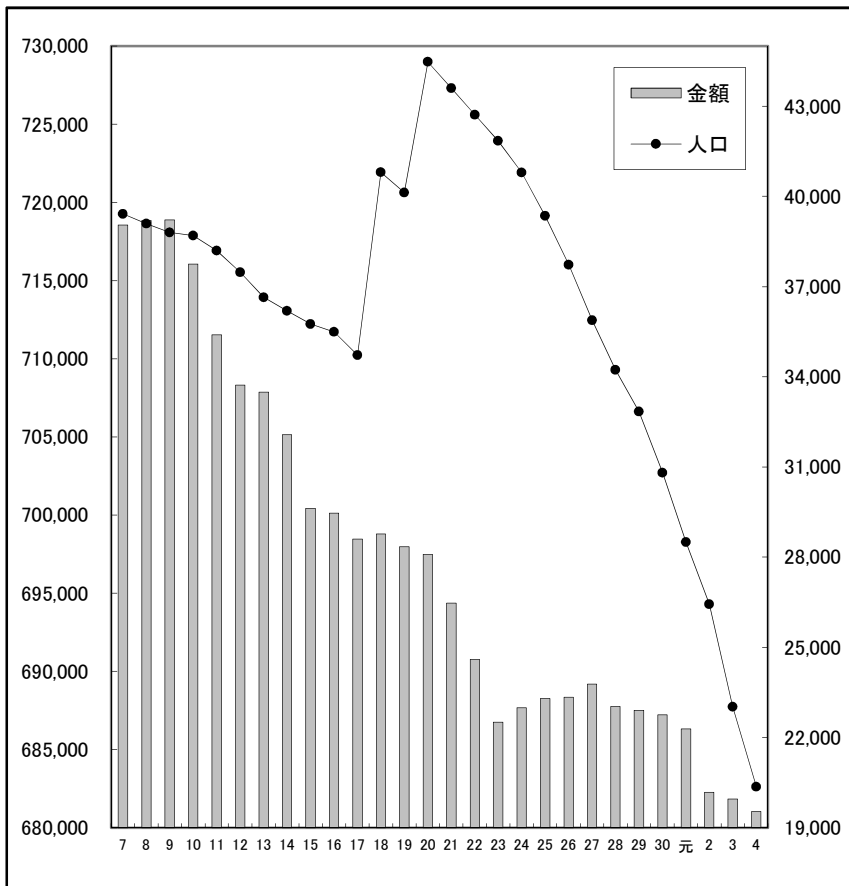
数量



(単位：人・トン)

年	人口	数量
7	719,277	50,135
8	718,653	48,370
9	718,076	47,461
10	717,885	47,089
11	716,913	43,927
12	715,543	43,098
13	713,921	43,509
14	713,058	42,281
15	712,223	40,220
16	711,728	38,824
17	710,236	38,644
18	721,945	37,578
19	720,628	37,515
20	728,996	35,607
21	727,318	34,691
22	725,610	31,665
23	723,949	27,851
24	721,924	28,244
25	719,153	30,516
26	716,019	29,180
27	712,474	29,128
28	709,286	27,846
29	706,633	25,688
30	702,702	24,945
元	698,275	23,924
2	694,296	22,273
3	687,748	21,252
4	682,619	18,284

金額



(単位：人・百万円)

年	人口	金額
7	719,277	39,059
8	718,653	39,203
9	718,076	39,220
10	717,885	37,753
11	716,913	35,403
12	715,543	33,722
13	713,921	33,496
14	713,058	32,068
15	712,223	29,619
16	711,728	29,462
17	710,236	28,607
18	721,945	28,771
19	720,628	28,349
20	728,996	28,101
21	727,318	26,464
22	725,610	24,604
23	723,949	22,513
24	721,924	22,991
25	719,153	23,297
26	716,019	23,333
27	712,474	23,774
28	709,286	23,030
29	706,633	22,908
30	702,702	22,751
元	698,275	22,279
2	694,296	20,178
3	687,748	19,959
4	682,619	19,537