

Shizuoka City  
The Plastic Model Capital of the World

模型の世界首都・静岡

Industry Promotion Division, Commerce & Industry Department, City of Shizuoka Economic Affairs Bureau

6-8 Asahi-cho, Shimizu-ku, Shizuoka-shi 424-8701 Japan  
TEL: 054-354-2188 FAX: 054-354-2132

Created: March 2025

Shizuoka City, the Plastic Model Capital of the World



Shizuoka City  
The Plastic Model Capital of the World

模型の世界首都・静岡



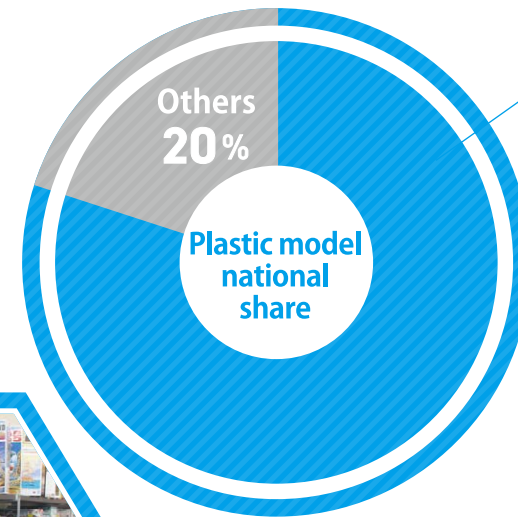
Industry Promotion Division, Commerce & Industry Department,  
City of Shizuoka Economic Affairs Bureau

©SOTSU-SUNRISE



# Shizuoka City and Models

Shizuoka City ships more  
plastic models than  
anywhere else in Japan!  
Its share is a whopping 80%.\*

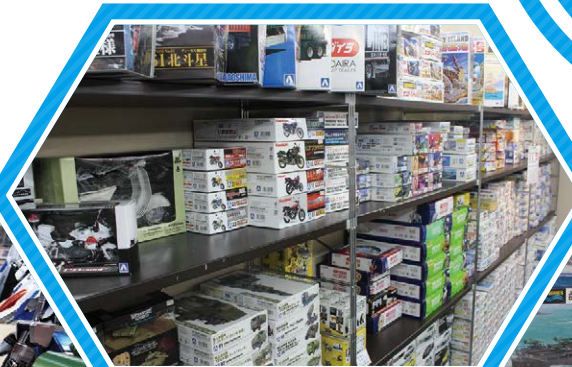


## Shizuoka City 80%

With such a tremendous share and long history, model fans adore Shizuoka as a sacred place for plastic models. With so many model makers headquartered in the city, it's no wonder that Shizuoka is known across the globe as "the plastic model capital of the world".

※Source: Calculated based on the Ministry of Economy, Trade and Industry's "2023 Basic Survey of Japanese Business Structure and Activities."

High-quality model products are shipped domestically and internationally from Shizuoka City.



## The Model History of Shizuoka City

Shizuoka City, with its abundant forest resources, has always had a thriving wood industry. The history of plastic models begins in the era of wooden models. Jiro Aoshima, the first airplane pilot in Shizuoka City, established the Aoshima Flight Research Institute in 1924 (the predecessor of the current Aoshima Bunka Kyozaï Co., Ltd.). The manufacturing of wooden model airplanes started in 1932, and was the first step toward Shizuoka becoming the plastic model capital of the world.



Jiro Aoshima



Suruga Takesensuji  
Bamboo Works

Local  
Traditional  
Crafts



Suruga Makie  
Gold-relief Lacquerware

1932~



Early wooden model airplanes

1950~



Early plastic models



The maiden plastic model of Tamiya, the "1/800 Scale Battleship Yamato" (1960)

The current model manufacturers used skill, passion and dedication to rise up during these turbulent times. This is why we can supply products loved all over to markets around the world.



©SOTSU-SUNRISE



©MODERHYTHM/Kazushi Kobayashi





# Shizuoka's Model Manufacturers

Who knew there were so many manufacturers headquartered in Shizuoka City?  
Let's take a look at what makes each company so special.

Shizuoka City  
The Plastic Model Capital of the World

**AOSHIMA**

## Aoshima Bunka Kyozaï Co., Ltd.

Location: 12-3 Ryutsu Center, Aoi-ku, Shizuoka-shi

Established by Jiro Aoshima, Shizuoka City's first private plane pilot. Primarily focused on making models children can play with, Aoshima produces innovative products one after the other. Presently, there is a wide range of products from scale models to character models.



## STUDIO YU-WA INC.



## ASUKA MODEL CO.,LTD STUDIO YU-WA INC.

Location: 3-5-30 Toyoda, Suruga-ku, Shizuoka-shi

From detailed military model kits to beginner-friendly kits, we develop and manufacture our products with the desire to share the fun and excitement of model-making with everyone. Some of our most popular products are Shizuoka's own "Imagawa-san" and "PLAMOSAL" the monkey.

**WoodyJOE**  
ウッディ ジョー



## WoodyJOE Co., Ltd.

Location: 691 Oya, Suruga-ku, Shizuoka-shi

The only wooden sailing ship model kit manufacturer in Japan. Other than sailboats, they also make precise wooden replicas of historical buildings. You can take time to experience the "joy of creating", while feeling the warmth of nature at your fingertips.

**ALEC**



## SHIMOMURA ALEC CO., LTD.

Location: 5-23 Oiwa-cho, Aoi-ku, Shizuoka-shi

We strive to produce ground-breaking tools for all your modeling needs, including the world's thinnest guidance saw with a thickness of 0.1mm. From the SuriSuriBar, to the HOLLY and the CUTLER, our tools continue to receive recognition under the Shizuoka Prefecture Management Innovation Plan.

**SWEET**  
AVIATION MODEL DIV.



## SWEET

Location: 1633-12 Utsutani, Okabe-cho, Fujieda-shi, Shizuoka Prefecture

We are a specialized manufacturer of cute palm size (1/144 scale) airplane plastic models. We are popular with modelers of a wide age range from young people to adults, incorporating the character of Shizuoka City native cartoonist Yukihiisa Fujita into our boxes and assembly instructions.

**TAMIYA**

## TAMIYA, INC.

Location: 3-7 Ondabara, Suruga-ku, Shizuoka-shi

The top brand in the plastic model industry. Boasts a huge variety of products, from display-purpose scale models such as cars, motorcycles, airplanes, ships and military vehicles, to models you can enjoy racing such as RC cars and Mini 4WD, as well as DIY models, tools and paint.

**Hasegawa**  
Hobby kits



## HASEGAWA CORPORATION

Location: 3-1-2 Yagusu, Yaizu-shi, Shizuoka Prefecture

The company was established in 1941, and in the same year it began manufacturing powered light planes made of cypress wood and rubber. Manufacturing of plastic models began in 1961, and since many of the company's products were planes we began to be known as "Airplane Hasegawa". Currently we develop products in various genres and are known to fans all over the world as a comprehensive model manufacturer.

**BAN  
DAI**



## BANDAI SPIRITS CO.,LTD Bandai Hobby Center

Location: 500-12 Naganuma, Aoi-ku, Shizuoka-shi

This is the production base of BANDAI SPIRITS CO., LTD. plastic models, including Gunpla ®. BANDAI SPIRITS CO., LTD. boasts the latest craftsmanship techniques and technology for making plastic models. We aim to make plastic models that everyone will enjoy and we will continue to evolve and disseminate these models to the world.

**Fujimi**



## FUJIMIMOKEI Co.,Ltd

Location: 4-21-1 Toro, Suruga-ku, Shizuoka-shi

Having begun with wooden models before shifting into plastic, we have since expanded into a wide variety of models, including battleships, cars, buildings, and characters. In recent years, we developed the "Next Series," a line of products that can be put together easily without the need for paint or adhesives.

**PLATZ**



## PLATZ Co., Ltd.

Location: 64-1 Nagasaki Shimizu-ku, Shizuoka-shi

In addition to manufacturing and selling our own products (plastic models, decals, etched parts, etc.), Platz is also an authorized import agent, selling products from world-famous plastic model makers (airplanes, tanks, figures, etc.).

**MODELUM**  
モデルリウム

## Modelium CO.,LTD

Location: 1243-19 Gokahorinouchi, Yaizu-shi, Shizuoka Prefecture

We're a small-scale model maker with a fresh approach—combining 3D printing with urethane resin casting and metallic molding to bring our kits to life. From highly detailed Ground Self-Defense Force figures to Maritime Self-Defense Force support vessels, we design every product from the perspective of true model enthusiasts.



**RM**  
RaupenModell



## Raupen Modell

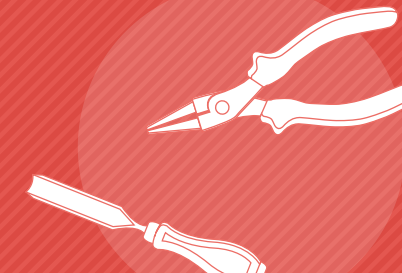
Location: High Residence K Building A No.302 2-7-17 Shobu, Aoi-ku, Shizuoka-shi

For fans who say they want to build more precise models, this is a manufacturer that primarily develops highly-detailed military parts, such as workable tracks for Self-Defense Force Type 10 and Type 90 tank models.



Shizuoka City  
The Plastic Model Capital of the World

模型の世界首都・静岡





# How a Plastic Model Kit is Made

Starting with the first Gunpla® "1/144 RX-78 Mobile Suit Gundam" released in July 1980, over 800 million Gunpla® units have been sold in Japan alone. We will introduce the process in which Gunpla® is made.

Shizuoka City  
The Plastic Model Capital of the World

## 1 Planning a Gunpla®

### Decide the lineup

First, we think "What kind of Gunpla® is made"? Not to mention commercializing the new models that appear in TV series, OVAs and games, we may remake aircraft that appeared in past works based on the needs of users. There are many cases where new categories are planned in order to meet diverse needs.



### Gunpla® production base Bandai Hobby Center

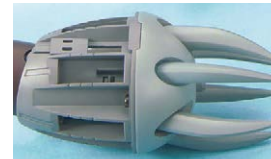
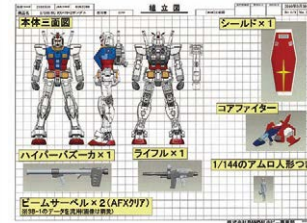


The Bandai Hobby Center in Shizuoka City is a production base for BANDAI SPIRITS CO., LTD. plastic models, including Gunpla® (Gundam plastic model). BANDAI SPIRITS CO., LTD. boasts the latest skilled techniques and technology for making plastic models here. We want to evolve the fun and entertainment of plastic models for customers around the world! Staff members are working on making new plastic models with enthusiasm.

## 2 Developing and Designing the Gunpla®

### Decide the specifications and gimmicks.

The person in charge of development consults with staff members who are in charge of design, molds and production. If there really is a mobile suit to commercialize, what kind of details and structure does it have? While imagining the real thing behind works such as animation, we will overlay development images and gimmick prototypes, and we will summarize the product specifications.

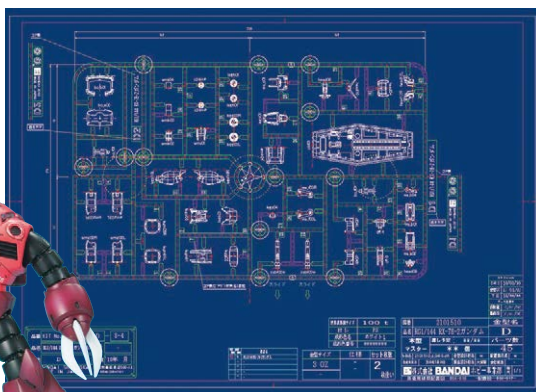


▲For example, how do you reproduce the mechanism where the "arms extend"? While consulting the design and molding staff, we may modify other Gunpla® or create a prototype for a new mechanism.

## 3 Prototyping and Mold Design for Gunpla®

### Place the finished parts in the runners.

This is a process that becomes the basis of mold making to design runners that have placed various parts that have been designed in the frame. While collecting the same kind of resin and parts of the same color, and considering searchability according to the assembly order, this is precisely a skilled technique to predict the flow of resin and to arrange runners in the manner of a puzzle.



### Trial designs and prototypes

Once the product specifications are completed, do the design using 3D-CAD (a three dimensional design system using a computer). Starting with examining the proportions of the entire mobile suit, we will design the details of individual parts. In addition to pursuing a real and cool shape, how easy it is to make the design and yet make it interesting is a showcase of the designer's skill. Create a prototype with a three-dimensional printer based on the finished data. Make prototypes for each part of the plastic model and check the appearance of the product, movable gimmicks, and how to assemble the product. The hobby center three-dimensional printer employs a system which forms a solid by stacking ultraviolet curable resin.



▲We will advance the design while expanding the image with hand drawings at the beginning.



▲This is a three-dimensional printer that can create three-dimensional objects in the same way as printing digital camera photos with printers.

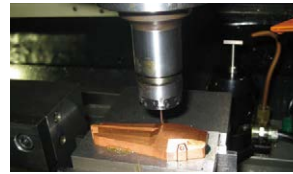


## 4 Mold Manufacturing

### Mold making with electric discharge machining and craftsmanship

First, we prepare an electrode of a shape to be dug into a mold. Using a wire electric discharge machining machine, an outside shape of the part from the copper clump is precisely cut out while passing an electric current through a very thin metal wire. Next, with a machining machine, cut out the shape in three dimensions according to the design data and create a copper master. When applying high voltage to this copper master, when pressed against the steel which becomes the mold, the contact sparks with a discharge phenomenon, the heat melts the steel and the shape of the copper master is copied. Place the parts made in this way, carve the resin flow path connecting them, and complete the mold with the craftsman's hands.

#### Create a copper master with machining



#### Electric discharge machining



#### Completed mold piece



#### Finishing with the craftsman's hands



#### Mold completion



#### All of the existing molds are active



At the Bandai Hobby Center, laser processing machines that use metal laser engraving with laser beams are also used.

This figure is 4 mm high

The stored mold can be used as soon as it is adjusted.

Engrave with a fineness of minimum 40 microns (1 micron = 1/1000 of 1 mm) and make a small part mold.

## 5 Gunpla® Production

### Molding resin into the mold and molding runner

Place the finished mold in the injection molding machine, pour the plastic melted with heat into the mold, cool it and solidify it to make a plastic model runner. The Bandai Hobby Center is equipped with a special multicolor molding machine capable of simultaneously injection-molding four kinds of different plastics, and produces runners with various characteristics. In addition, an unmanned automatic transfer robot is used for replenishing resin pellets as raw material and moving completed runners to a warehouse, mass-producing them efficiently.



◀An automatic carrier that carries raw materials and molded products in the factory has "red" and "green" coloring. Moving smoothly between machines, they also organize warehouses.

### Don't make the assembly too complicated!

#### Runners made of 4 colors of plastic

Different color plastics are combined in one part.



#### A moving joint is completed

The joint has already been made to move in the runner.



#### Assembly completed when separating



This is a palm part. When detached from the runner, parts of the hand that made the finger move are being completed.

## 6 Packaging

### Completed Gunpla® packed in packages designed for each product

The Gunpla® package is designed to convey the appeal of mobile suits and products using the entire box. Packed molded runners are packed together with assembly instructions and decals, and shipped to various countries as well as within Japan.

#### Verify safety and robustness to complete

Can you assemble the product properly as per the instructions?  
Can you enjoy it safely?  
Are there fragile parts?  
The staff in charge of quality control will actually make and check the product.



We sometimes review our products with professional eyes and sometimes from the perspective of a person who bought them.



©SOTSU・SUNRISE



# Hobby events held in Shizuoka City

Various events related to hobbies are held throughout the year in Shizuoka City.

Shizuoka City  
The Plastic Model Capital of the World

## Spring

### Shizuoka Hobby Show (May)

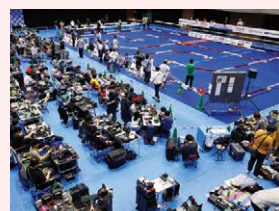
Japanese famous model manufacturers of plastic models, railway models, railroad models gather together, and it is the largest hobby exhibition in Japan that announces remarkable new products. The public days draw large crowds of visitors from all over Japan, creating a lively and bustling atmosphere.



Organizer: Shizuoka Model Teaching Material Cooperative Association  
Venue: Twin Messe Shizuoka (Magarikane, Suruga-ku, Shizuoka-shi)

### RC Car Festival in Hobby City Shizuoka

Get hands-on with RC cars, take the controls, and have a blast at this exciting companion event held alongside the Shizuoka Hobby Show! Taking place at the Shizuoka Nambu Gymnasium next to Twin Messe Shizuoka, the event is a collaboration between automakers—like Toyota—and model manufacturers, showcasing the fun and appeal of cars through RC experiences. You'll also find plenty of real race machines on display, straight from the track.



Venue: Shizuoka City Nambu Gym (Magarikane, Suruga-ku, Shizuoka-shi)

### Modelers' Club Exhibition

On the public days of the Shizuoka Hobby Show, model enthusiasts gather not only from across Japan but also from around the world to showcase their proud creations. With over 12,000 pieces on display, it stands as one of the world's largest model exhibitions.



## Summer

### Shimizu Hobby Show (August)

Held in Shimizu, this all-day hobby event is packed with fun! Learn about the history of model-making, view amazing works by modelers, ride miniature trains, build and operate your own models, shop at the flea market, and more!



Organizer: Shimizu Hobby Show Executive Committee  
Venue: Shimizu Marine Building & Shimizu Marine Terminal (Hinode-cho, Shimizu-ku, Shizuoka-shi)

ホビーのまち静岡  
HOBBY CITY SHIZUOKA



Looking for events in  
Hobby City Shizuoka?  
Start your search here!



## Autumn

### Modeler's exhibition

Many modelers not only from Shizuoka City but also from outside the prefecture participate. Works of pride are exhibited. You can see high-quality work.



### SCM (Shizuoka Character Modeler's Exhibition) (December)



SCM is a model exhibition by character modelers held at "Hobby City Shizuoka". Many modelers gathered not only from Shizuoka City but also from inside and outside the prefecture, and they exhibit a lot of works which are full of variety. Surely you will want to make a model!



Organizer: SCM Executive Committee  
Venue: Shizuoka Hobby Square (Minami-cho, Suruga-ku, Shizuoka-shi)

### Tamiya Fair (November)

Hosted by Tamiya, this autumn hobby event is a full-scale celebration of models you can see, touch, and experience. Highlights include new product unveilings, a plastic model exhibition, national RC car and Mini 4WD tournaments, hands-on Tamiya craft workshops, and interactive play zones.



Organizer: TAMIYA, INC. Venue: Twin Messe Shizuoka (Magarikane, Suruga-ku, Shizuoka-shi)

## Winter

### Shizuoka AFV Meeting (February)



This is an event that brings scenes mainly of plastic models such as tanks, soldier figures and individual model works, and presents them in contest format.

Organizer: Shizuoka AFV Meeting Executive Committee  
Venue: Shizuoka Hobby Square (Minami-cho, Suruga-ku, Shizuoka-shi)



### Christmas Festa (December)

A festival celebrating a wide range of creative works, from handmade crafts like accessories, miscellaneous goods, and clothing, to plastic models—of which Shizuoka City holds an 80% share of the national market.



Organizer: Hobby Promotion Council Shizuoka Venue: Twin Messe Shizuoka (Magarikane, Suruga-ku, Shizuoka-shi)



# Initiatives under the Shizuoka City Plastic Model Project



## THE SHIZUOKA CITY PLASTIC MODEL PROJECT

The Shizuoka City Plastic Model Project is a regional revitalization initiative that brings together the public and private sectors to build a “City of Plastic Models” you can truly experience.



### The Three Pillars of the Shizuoka City Plastic Model Project

#### 1.Environmental Development

Promoting “Shizuoka City, the Plastic Model Capital of the World” through public-private collaboration

- “Plamonuments”
- PR tools
- Runner art
- Digital stamp rallies



#### 2.Human Resource Development

Fostering the next generation of talent for the model and manufacturing industries through plastic models

- Hobby Show invitation program for elementary, junior high, and high school students
- Manufacturing career education
- Shizuoka-style school education programs
- Model-Making & Manufacturing University



#### 3.Content Development

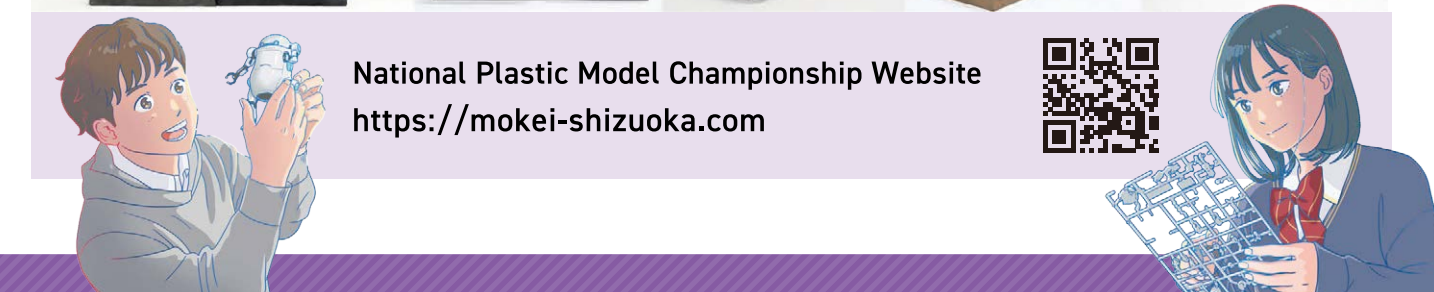
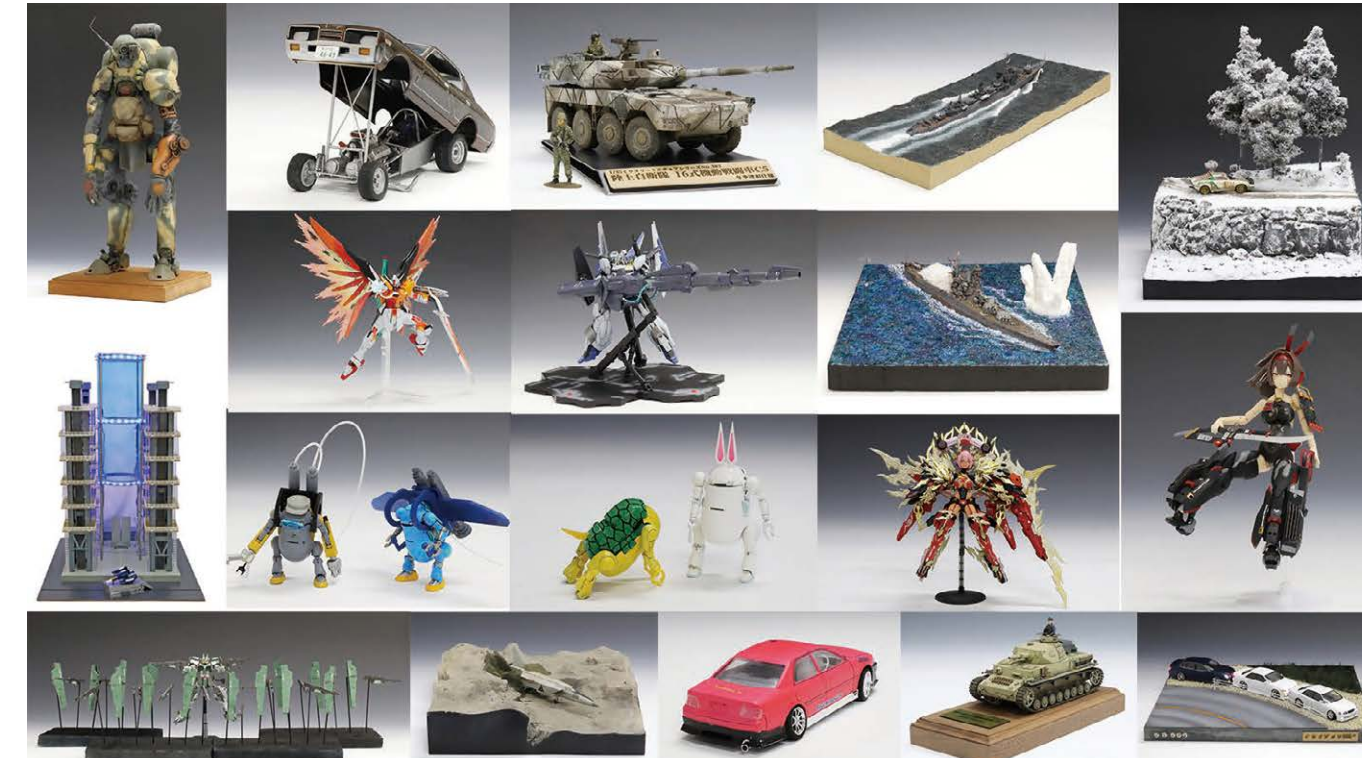
Providing opportunities to experience the appeal of plastic models through events and competitions

- National Plastic Model Championship
- Various collaboration events



## National Plastic Model Championship (Content Development)

As the “Plastic Model Capital of the World,” Shizuoka hosts this championship through a collaboration between local government, model manufacturers, and educators. The aim is to deepen high school students’ interest in craftsmanship while cultivating well-rounded skills—such as creativity, planning, technical ability, composition, presentation, and communication—that are essential for success in society.



National Plastic Model Championship Website  
<https://mokei-shizuoka.com>



Presentations being judged during the championship.

Official Supporters of the Shizuoka City  
Plastic Model Project

## LINKL PLANET



Musical video for official supporter song  
“TetoTe” out now on YouTube to rave reviews!



# Plamonument Map (As of 1 March 2025)

“Plamonuments” are playful monuments designed to resemble unassembled plastic models, created as symbols of the “Shizuoka City Plastic Model Project.”

**1**



**Plastic Model Capital of the World Plamonument**  
Location: JR Shizuoka Station South Exit Plaza  
Installed: 19 March 2021  
Installed by: City of Shizuoka  
Features: Welcome to the Plastic Model Capital of the World! Standing in front of the monument, you'll feel as if you've become a part of a plastic model, creating a great new photo spot.

**2**



**BOX Art Plamonument**  
Location: JR Shizuoka Station South Exit Plaza  
Installed: 19 March 2021  
Installed by: City of Shizuoka  
Features: A promotional monument featuring one-of-a-kind box art by artist Eiji Shimamura.

**3**



**Plastic Model Capital of the World Plamonument**  
Location: Twin Messe Shizuoka  
Installed: 19 March 2021  
Installed by: City of Shizuoka  
Features: Welcome to the Plastic Model Capital of the World! Standing in front of the monument, you'll feel as if you've become a part of a plastic model, creating a great new photo spot.

**4**



**Mailbox Plamonument**  
Location: Shizuoka City Hall, Shizuoka Government Building  
Installed: 19 March 2021  
Installed by: City of Shizuoka  
Features: A real, functional mailbox turned into a plastic model! Why not try mailing a letter from it?

**5**



**Payphone Plamonument**  
Location: JR Shizuoka Station Concourse (North Exit)  
Installed: 13 March 2022  
Installed by: NTT West Shizuoka Branch  
Features: The first collaboration between the public and private sectors for a plamonument. This classic payphone has been turned into a functional plastic model!

**6**



**Vault Door Plamonument**  
Location: The Seishin Shinkin Bank Main Branch Sales Dept.  
Date: 3 February 2023  
Installer: The Seishin Shinkin Bank  
Features: The first plamonument by a company based in Shizuoka City. The vault door and the original character “Kakeru-kun” have been transformed into a plastic model!

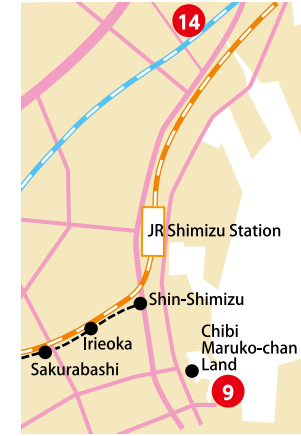
**7**



**Tokugawa Ieyasu Armor Plamonument**  
Location: Jodaibashi Bridge  
Installed: 31 March 2023  
Installed by: City of Shizuoka  
Features: A monument inspired by the “Kindami-gusoku,” the armor worn by a young Tokugawa Ieyasu! You can almost envision Ieyasu preparing for battle.



Map of Shizuoka City showing the locations of Plamonuments 1 through 14. The map includes major roads like the Tokaido Line, Tomei Expressway, and 407, and landmarks like JR Shizuoka Station, Sumpu Castle Park, and the Abe River.



Map of the Shin-Shimizu area showing the locations of Plamonuments 9, 10, and 11. The map includes the JR Shimizu Station, Chibi Maruko-kan Land, and the Irieoka area.

**14**



**Tuna Plamonument**  
Location: Shimizu Reito Co., Ltd. Parking Lot  
Installed: 1 February 2025  
Installed by: Shimizu Reito Co., Ltd.  
Features: A tuna plamonument has arrived in Shimizu, Japan's top port for frozen tuna! With a diagram labeling each cut of fish, you'll be a tuna master in no time!

**8**



**Hotel Sign Plamonument**  
Location: Hotel Wing International Shizuoka  
Installed: 10 August 2023  
Installed by: Yoshicon Co., Ltd.  
Features: A sign-style plamonument decorated with icons of a bed, bathtub, and suitcase. Guests are welcomed by this playful plastic model monument!

**9**



**Hinode Plamonument**  
Location: Shimizu Marine Building  
Installed: 12 August 2023  
Installed by: Shimizu FAZ Co., Ltd.  
Features: Welcoming cruise passengers and port visitors! This plamonument showcases Shimizu Ward's iconic treasures—Mount Fuji, Miho no Matsubara, tuna, and soccer.

**10**



**Ashtray Plamonument**  
Location: JR Shizuoka Station North Exit Smoking Area  
Installed: 25 December 2023  
Installed by: Japan Tobacco Inc.  
Features: A fully functional ashtray turned into a monument! Designed to promote smoking etiquette, this plamonument aims to create a society where both smokers and non-smokers can coexist comfortably.

**11**



**Vending Machine & Bench Plamonument**  
Location: Under the south deck of Keyaki Plaza  
Installed: 28 February 2024  
Installed by: Suntory Beverage Solutions Ltd.  
Features: A soft drink vending machine and bench turned into a plastic model! Feeling thirsty? Take a break and enjoy a moment of refreshment.

**12**



**Hospital Pictogram Plamonument**  
Location: Entrance rotary of the Emergency & Critical Care Center, east side of Shizuoka Saiseikai General Hospital  
Installed: 29 March 2024  
Installed by: Shizuoka Saiseikai General Hospital  
Features: The first white plamonument, symbolizing cleanliness. Hospital-related pictograms have been transformed into a plastic model!

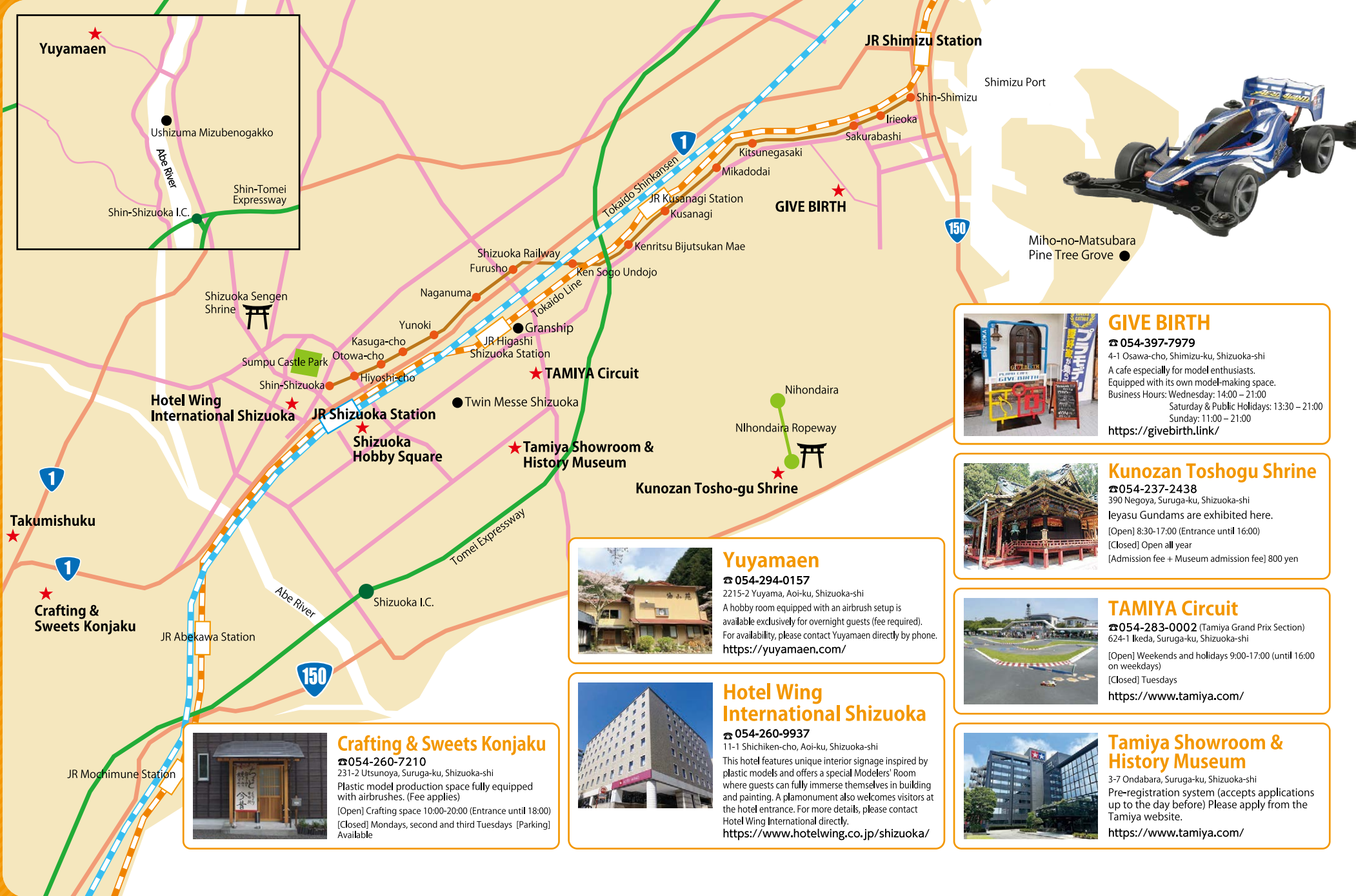
**13**



**Shinkansen Plamonument**  
Location: In front of Parché Food Hall (JR Shizuoka Station)  
Installed: 10 October 2024  
Installed by: Shizuoka Terminal Development Co., Ltd.  
Features: Created to commemorate the 60th anniversary of the Tokaido Shinkansen, this is the first two-tone plamonument! It features an actual seat from the N700 series and a destination display panel with changeable text—sure to delight Shinkansen fans!

# Shizuoka City Hobby Spot Introduction

Shizuoka City  
The Plastic Model Capital of the World



Map of Shizuoka City showing hobby spots. The map includes major roads like the Tokaido Line, Tomei Expressway, and 150, and landmarks like JR Shizuoka Station, Sumpu Castle Park, and the Abe River. Hobby spots are marked with red stars and numbered 1 through 14.

**GIVE BIRTH**  
☎ 054-397-7979  
4-1 Osawa-cho, Shimizu-ku, Shizuoka-shi  
A cafe especially for model enthusiasts. Equipped with its own model-making space.  
Business Hours: Wednesday: 14:00 – 21:00  
Saturday & Public Holidays: 13:30 – 21:00  
Sunday: 11:00 – 21:00  
<https://givebirth.link/>

**Kunozan Toshogu Shrine**  
☎ 054-237-2438  
390 Negoya, Suruga-ku, Shizuoka-shi  
Ieyasu Gundams are exhibited here.  
[Open] 8:30-17:00 (Entrance until 16:00)  
[Closed] Open all year  
[Admission fee + Museum admission fee] 800 yen

**TAMIYA Circuit**  
☎ 054-283-0002 (Tamiya Grand Prix Section)  
624-1 Ikeda, Suruga-ku, Shizuoka-shi  
[Open] Weekends and holidays 9:00-17:00 (until 16:00 on weekdays)  
[Closed] Tuesdays  
<https://www.tamiya.com/>

**Yuyamaen**  
☎ 054-294-0157  
2215-2 Yuyama, Aoi-ku, Shizuoka-shi  
A hobby room equipped with an airbrush setup is available exclusively for overnight guests (fee required). For availability, please contact Yuyamaen directly by phone.  
<https://yuyamaen.com/>

**Hotel Wing International Shizuoka**  
☎ 054-260-9937  
11-1 Shichiken-cho, Aoi-ku, Shizuoka-shi  
This hotel features unique interior signage inspired by plastic models and offers a special Modelers' Room where guests can fully immerse themselves in building and painting. A plamonument also welcomes visitors at the hotel entrance. For more details, please contact Hotel Wing International directly.  
<https://www.hotelwing.co.jp/shizuoka/>

**Crafting & Sweets Konjaku**  
☎ 054-260-7210  
231-2 Utsunoya, Suruga-ku, Shizuoka-shi  
Plastic model production space fully equipped with airbrushes. (Fee applies)  
[Open] Crafting space 10:00-20:00 (Entrance until 18:00)  
[Closed] Mondays, second and third Tuesdays [Parking] Available

**Tamiya Showroom & History Museum**  
3-7 Ondabara, Suruga-ku, Shizuoka-shi  
Pre-registration system (accepts applications up to the day before) Please apply from the Tamiya website.  
<https://www.tamiya.com/>



# Shizuoka City Hobby Spot Introduction

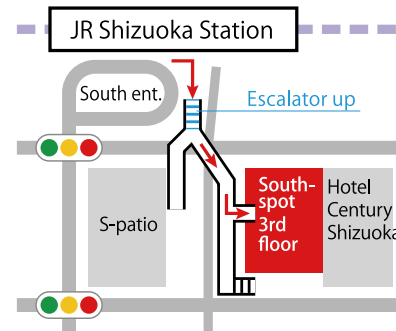
## Shizuoka Hobby Square



Just a 1-minute walk from JR Shizuoka Station South Exit! Shizuoka Hobby Square serves as the city's hub for hobby and model information. It features permanent exhibits from Shizuoka-based model manufacturers and hosts a variety of hands-on hobby events throughout the year.

The official shop offers a wide selection of products from various model manufacturers. From model kits to original merchandise like T-shirts, it's packed with exciting items for hobby fans.

Location	Southport Shizuoka 3F 18-1 Minami-cho, Suruga-ku, Shizuoka-shi
Hours	Weekdays 11:00-18:00 Saturdays, Sundays, and holidays 10:00-18:00 Closed on Mondays (If Monday is a holiday, closed on Tuesday)
Access	1 minute walk from the south exit of JR Shizuoka Station About 15 minutes by car from the Tomei Expressway Shizuoka Interchange About 30 minutes by car from the Shin-Tomei Expressway Shin Shizuoka Interchange (Paid parking is available in the area)
URL	<a href="https://www.hobbysquare.jp">https://www.hobbysquare.jp</a>



Products from five Shizuoka-based model manufacturers are on display: Aoshima Bunka Kyozaï Co., Ltd., Woody JOE Co., Ltd., Tamiya Inc., Hasegawa Corp., and BANDAI SPIRITS Co., Ltd.

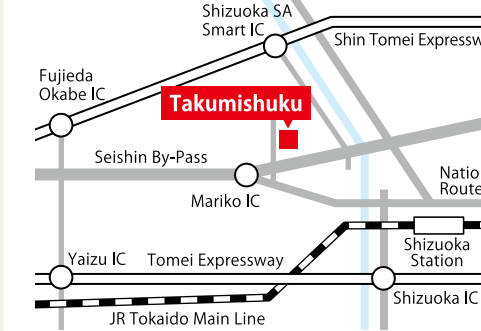
## Takumishuku (Plastic Model Studio)



Located in Mariko, Suruga Ward, this is Shizuoka City's traditional craft experience facility. In the model workshop, supervised by Tamiya, visitors of all ages and genders can enjoy hands-on model building experiences.

At this model workshop born in Shizuoka—Japan's No.1 producer of plastic models—you'll find hands-on experiences that will make you think, "I want to try building one!" and "I want to do it again!"

Location	3240-1 Mariko, Suruga-ku, Shizuoka-shi
Hours	10:00–19:00 (Model workshop open until 17:00) Closed on Mondays (or the following weekday if Monday is a national holiday)
Access	By bus: From JR Shizuoka Station North Exit, take the Shizutetsu Justline Chubu Kokudo Line (bound for Fujieda Ekimae) at Bus Stop #7. Get off at Togeppo Sumpu Takumishuku Iriguchi and walk about 5 minutes. By car: Approx. 15 minutes from Tomei Expressway "Shizuoka I.C." or approx. 30 minutes from Shin-Tomei Expressway "Shin-Shizuoka I.C."
Parking	Free parking available
URL	<a href="https://takumishuku.jp">https://takumishuku.jp</a>



Under the guidance of the workshop master, participants can experience the joy and romance of craftsmanship through hands-on model building.

Using Tamiya tools, visitors can enjoy a variety of hands-on activities such as crafting flowers from plastic sheets, assembling and painting dinosaur plastic models, building and racing Mini 4WD cars, and more. Special workshops and cultural classes are also held here.



A participant enjoying the model-making experience



Models you can build



While we recommend making a reservation online for a time that suits you best, walk-ins are also welcome if seats are available.



Permanent course for Mini 4WD



Workshop



Official shop