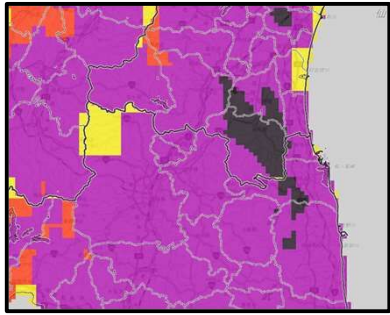


Let's check Real-time risk map (KIKIKURU) !



KIKIKURU Screen

Check the current risk level
Using **FIVE** color codes



The map shows possible risks.
Scan to view



| | | | |
|-----|----------------|---------|----------------------|
| 高 | Emergency | Level 5 | Evacuate by Level 4! |
| 危険度 | High Risk | Level 4 | |
| | Warning | Level 3 | |
| | Advisory | Level 2 | |
| 低 | Early Advisory | Level 1 | |

Important Information

Do not forget to share this with your family!

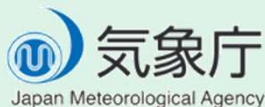
- Check hazardous areas near your home in advance using **hazard maps** or your **local government website**.
- When a disaster is expected, check updates using weather warnings and **KIKIKURU**. Follow your local government's **evacuation instructions** and take immediate action to stay safe.

Let's check disaster weather information on the Japan Meteorological Agency Website.



Scan for Website

Attention!



3-6-9 Toranomon, Minato City,
Tokyo 105-8431, Japan
TEL : 03-6758-3900
FAX : 03-3434-9086 (Accessible to people with hearing impairments)

Thanks to the **Nagasaki International Student Support Center** for their cooperation in translating this Japan Meteorological Agency leaflet into English.

Staying Safe During Heavy Rain Disasters

~Using Weather Warnings for Disaster Preparedness~

GUIDE BOOK

Harerun Quiz !

Weather warnings are color-coded.
Do you know which color tells everyone to evacuate immediately from dangerous areas?

| | | | | |
|---------|--------|---------|-----------|---------|
| ① | ② | ③ | ④ | ⑤ |
| しろ 白 | き 黄 | あか 赤 | むらさき 紫 | くろ 黒 |
| White | Yellow | Red | Purple | Black |



Harerun

(Japan Meteorological Agency Mascot)

Find the answer in this leaflet! ♪



NATURAL DISASTERS AROUND US



Let's Learn The 5 Alert Levels



Weather Warnings on flooding, heavy rain, landslides, and storm surges are shown by colors and levels to indicate the degree of danger.

River Flooding

Areas to avoid: **Near rivers**



Flooding may cover buildings and roads with water.

Heavy Rain

Areas to avoid: **Low-lying areas**



Places like underpasses and underground spaces may get flooded.

Landslide

Areas to avoid: **Near mountains and cliffs**



Mountains and slopes may collapse, causing soil and sand to flow downward.

Storm Surge

Areas to avoid: **Coastal areas**



When typhoons approach, sea levels may rise and water may flow onto land.

How to evacuate

- Move to a safe place before a disaster happens.

- If it is difficult to evacuate from your home,
 1. Landslides : Move to a room away from mountains and steep slopes.
 2. Flooding, heavy rain, or storm surge : Move to higher ground as much as possible.

To evacuate quickly, please check hazard maps in advance to understand where disasters may occur.



Check the hazard map here.

White



Level 1: Early Advisory

Pay attention to upcoming information.



Yellow



Level 2: Advisory

Talk with your family about the dangers of a warning and how to evacuate safely.



Red



Level 3: Warning

People who take longer to evacuate (e.g., elderly) should start evacuating early.



Purple



Level 4: Urgent Warning

A disaster could happen at any time. Evacuate immediately from dangerous areas.

Quiz!
Answer
④

Don't wait any longer, evacuate immediately

Black



Level 5: Emergency Warning

Flooding or landslides may already be occurring. Evacuate immediately to any safer location.



Move away from slopes! Go to higher ground inside the building!